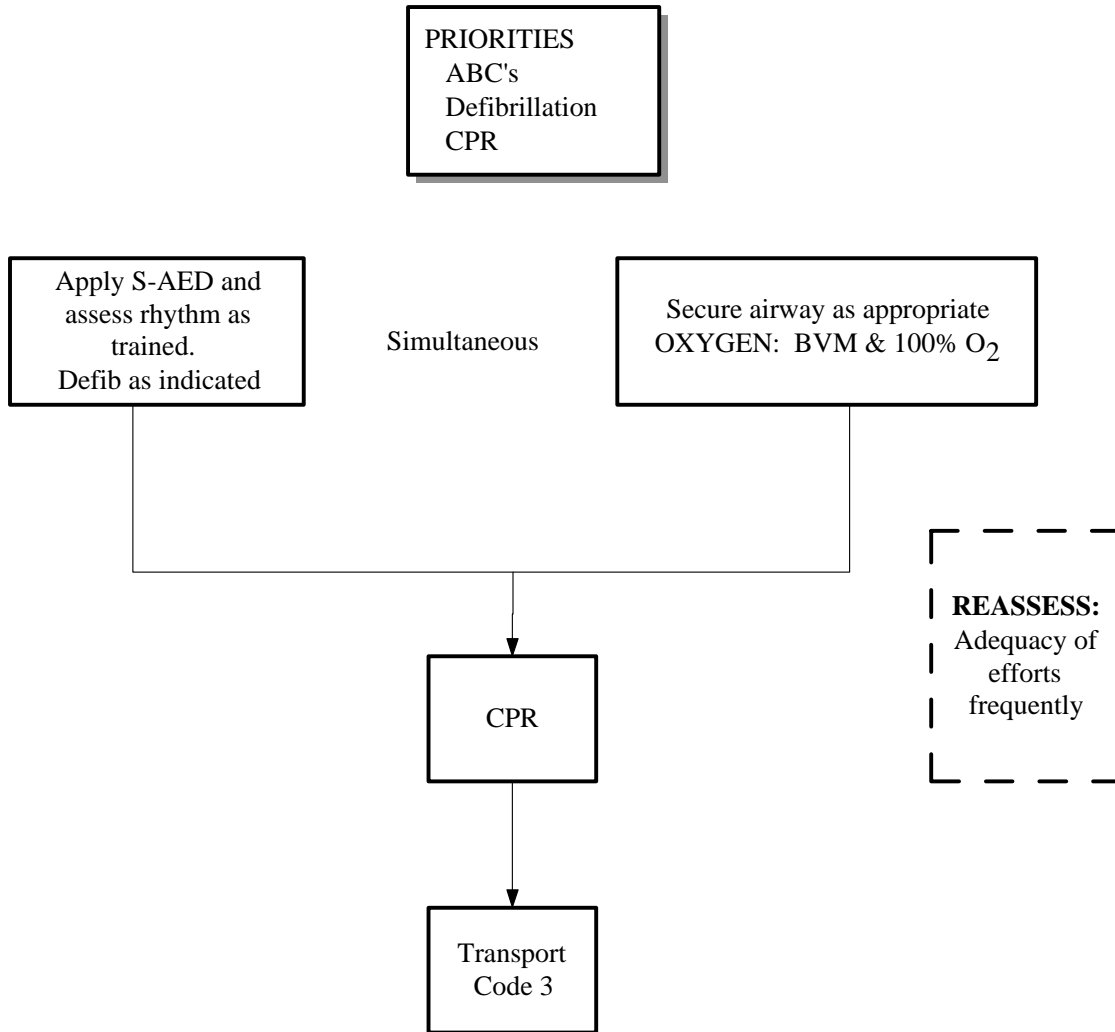


# San Joaquin EMS Agency

## BLS TREATMENT GUIDELINES - CARDIAC

CARDIOPULMONARY ARREST - NON-TRAUMATIC (SJ-B101) effective 07/01/99



### Special Notes:

Near Drowning - People who have been submerged in cold water are salvageable for a long period of time. All drowning victims should be resuscitated.

Hypothermia - These patients often look dead when they are still salvageable.

San Joaquin EMS Agency  
BLS TREATMENT GUIDELINES - CARDIAC

---

**CORONARY ISCHEMIC CHEST DISCOMFORT (SJ-B102)** effective 07/01/99

PRIORITIES  
ABC's  
Obtain Good History

Secure airway as appropriate  
OXYGEN: high flow via mask

May allow Pt's own:  
NITROGLYCERINE: 1/150 gr.  
(0.4 MG) sublingual  
(only if SBP >110)

Code 3 Transport if Pt in  
shock

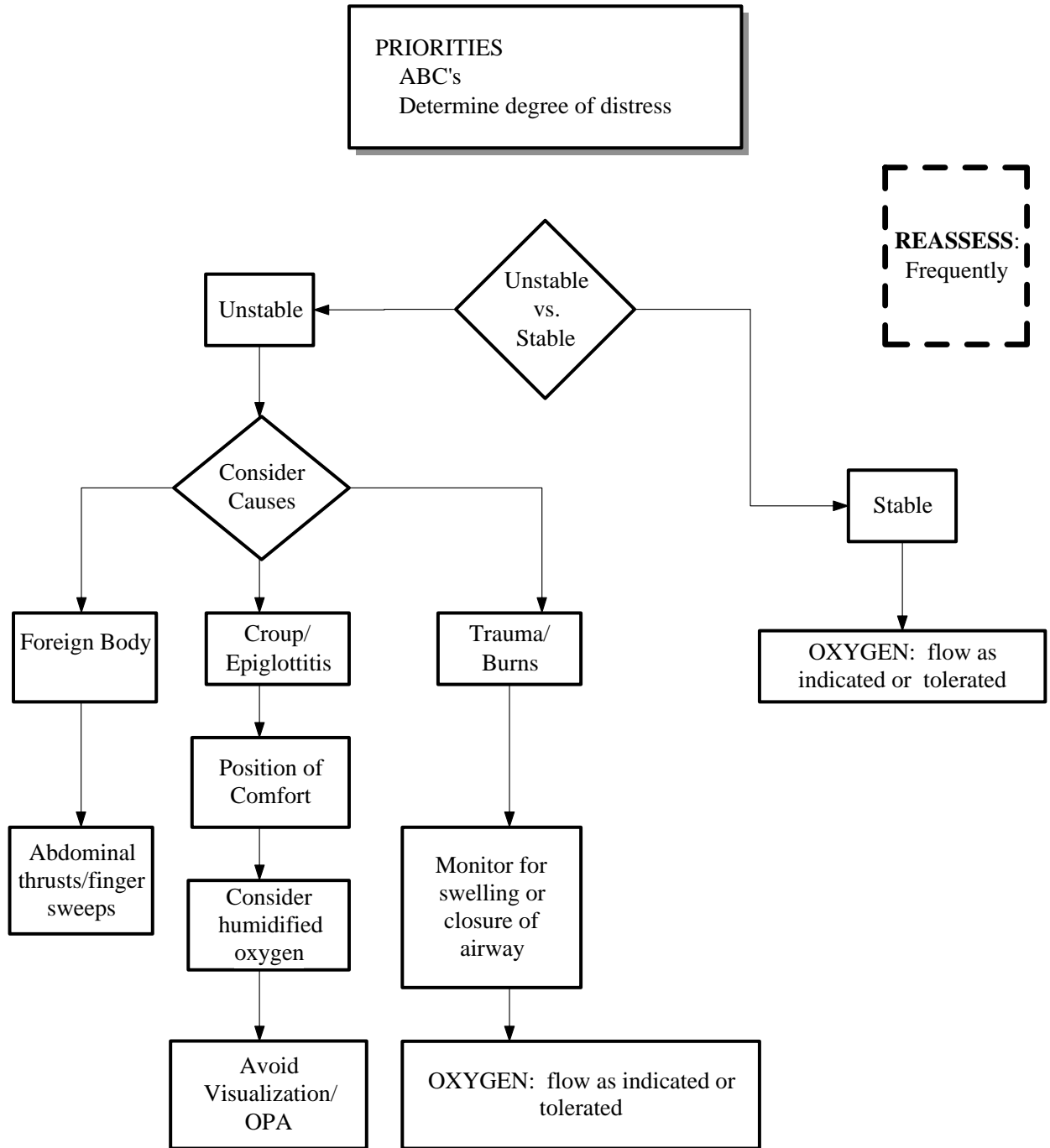
**REASSESS:**  
Airway,  
Pulse,  
throughout.

Consider applying S-AED pads on patient for  
rapid defibrillation as indicated, if available

San Joaquin EMS Agency

**BLS TREATMENT GUIDELINES - RESPIRATORY**

**AIRWAY OBSTRUCTION - STRIDOR (SJ-B201)** effective 07/01/99



San Joaquin EMS Agency  
**BLS TREATMENT GUIDELINES - RESPIRATORY**

---

**RESPIRATORY DISTRESS (SJ-B202)** effective 07/01/99

**PRIORITIES**  
ABC's  
Determine degree of distress

Secure airway as appropriate  
OXYGEN: low flow via nasal cannula,  
increase as appropriate

**REASSESS:**  
Frequently

Position of Comfort

Assist respirations as indicated

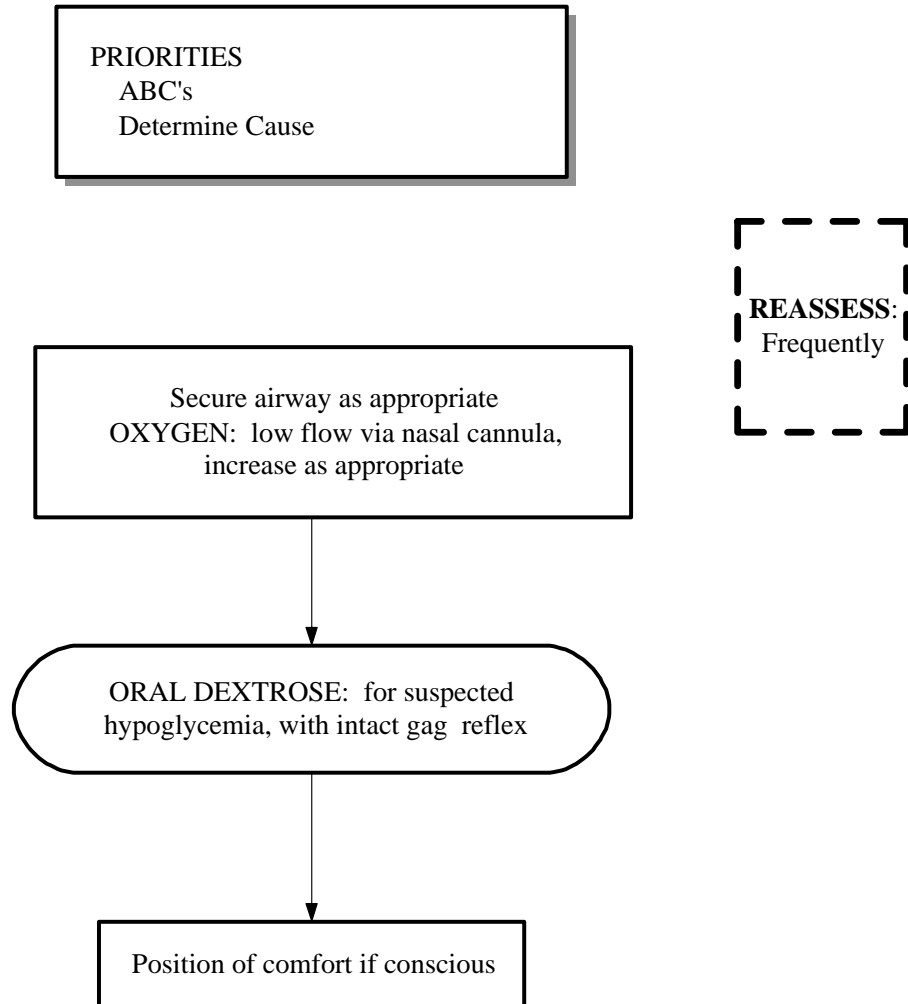
Immediate Transport as indicated

San Joaquin EMS Agency

**BLS TREATMENT GUIDELINES - NEUROLOGIC**

---

**ALTERED LEVEL OF CONSCIOUSNESS (SJ-B301)** effective 07/01/99



San Joaquin EMS Agency  
**BLS TREATMENT GUIDELINES - NEUROLOGIC**

---

**ACUTE CEREBROVASCULAR ACCIDENT (SJ-B302)** effective 07/01/99

**PRIORITIES**  
ABC's  
Identify and document neurologic deficits  
- progressive vs. non-progressive

Secure airway as appropriate  
Prevent Aspiration  
OXYGEN: High flow via mask,  
Assist ventilations as indicated

**REASSESS:**  
Frequently

Transport with Pt's head in neutral position

**REASSESS and DOCUMENT** neurologic findings  
frequently

**TRANSPORT:** code 3 if progressive  
neurologic deficit evident

San Joaquin EMS Agency  
**BLS TREATMENT GUIDELINES - NEUROLOGIC**

---

**SEIZURES (SJ-B303)** effective 07/01/99

PRIORITIES  
ABC's  
Prevent injury

Secure airway as appropriate  
OXYGEN: High flow via mask

Position on side if no trauma

**REASSESS:**  
Airway  
Heart Rate  
Frequently

San Joaquin EMS Agency  
**BLS TREATMENT GUIDELINES - NEUROLOGIC**

---

**SYNCOPE (SJ-B304)** effective 07/01/99

**PRIORITIES**  
ABC's  
Prevent injury

Secure airway as appropriate  
OXYGEN: High flow via mask

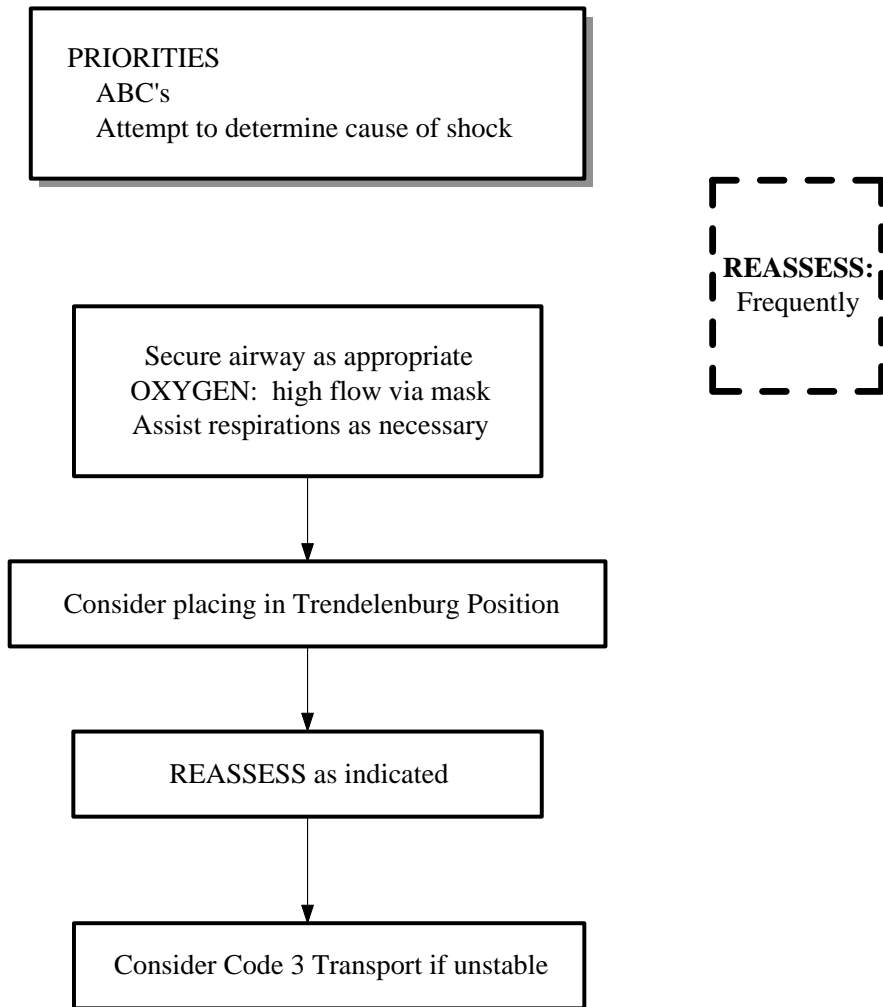
Position on side if no trauma

**REASSESS:**  
Frequently

San Joaquin EMS Agency  
BLS TREATMENT GUIDELINES - MEDICAL

---

**SHOCK, NON-TRAUMATIC (SJ-B401)** effective 07/01/99



San Joaquin EMS Agency

**BLS TREATMENT GUIDELINES - MEDICAL**

---

**ABDOMINAL EMERGENCIES - NON-TRAUMATIC (SJ-B402)** effective 07/01/99

PRIORITIES  
ABC's  
Attempt to determine cause of shock

Secure airway as appropriate  
OXYGEN: high flow via mask

Nothing by mouth

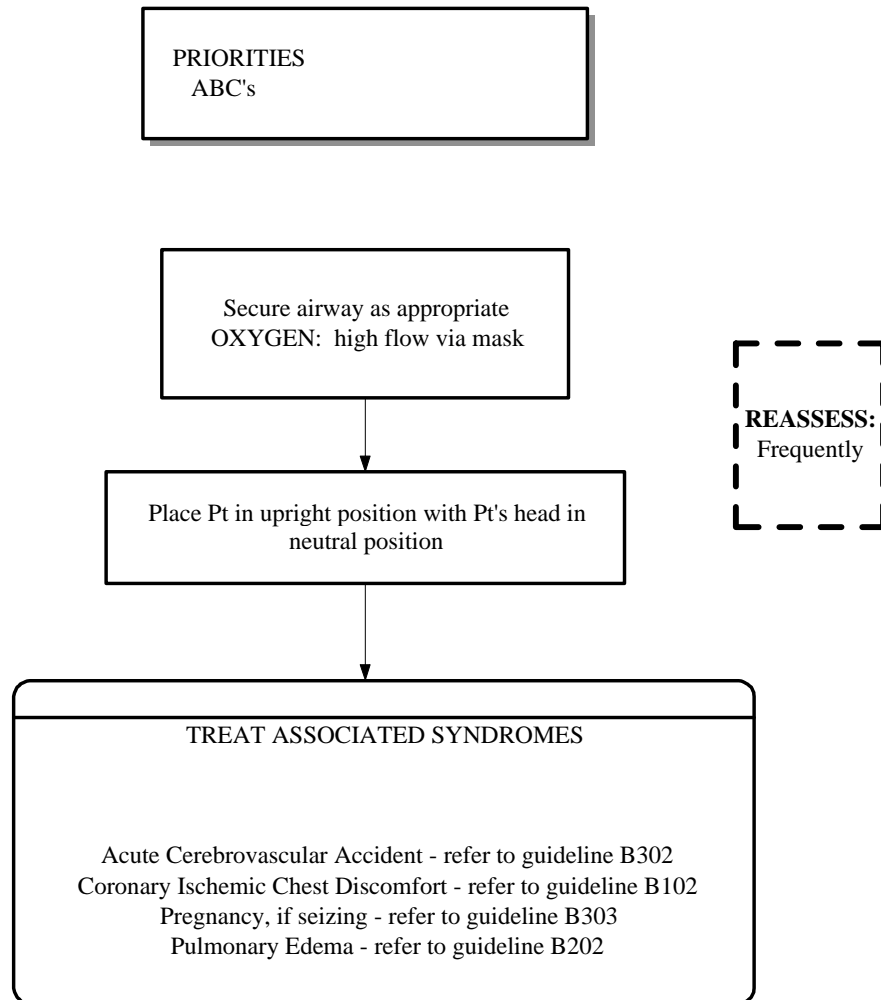
Position of Comfort

Anticipate  
Vomiting  
(save sample)

San Joaquin EMS Agency  
BLS TREATMENT GUIDELINES - MEDICAL

---

HYPERTENSION (SJ-B403) effective 07/01/99

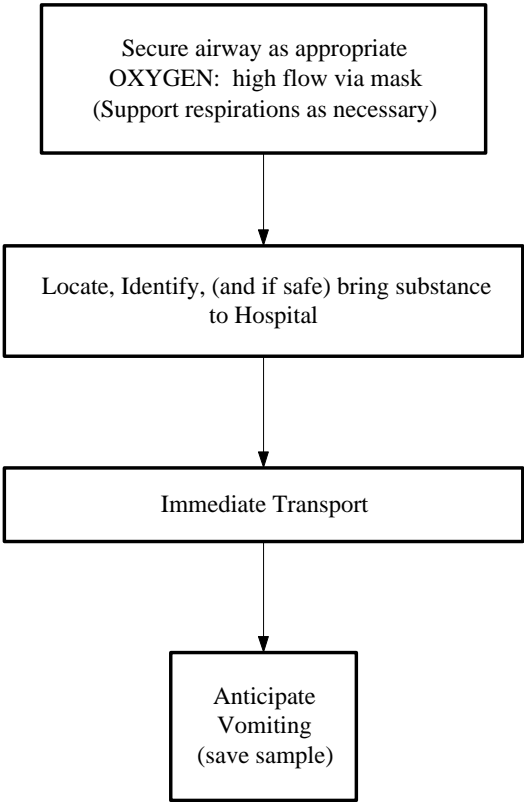


San Joaquin EMS Agency  
BLS TREATMENT GUIDELINES - MEDICAL

---

POISONINGS (SJ-B404) effective 07/01/99

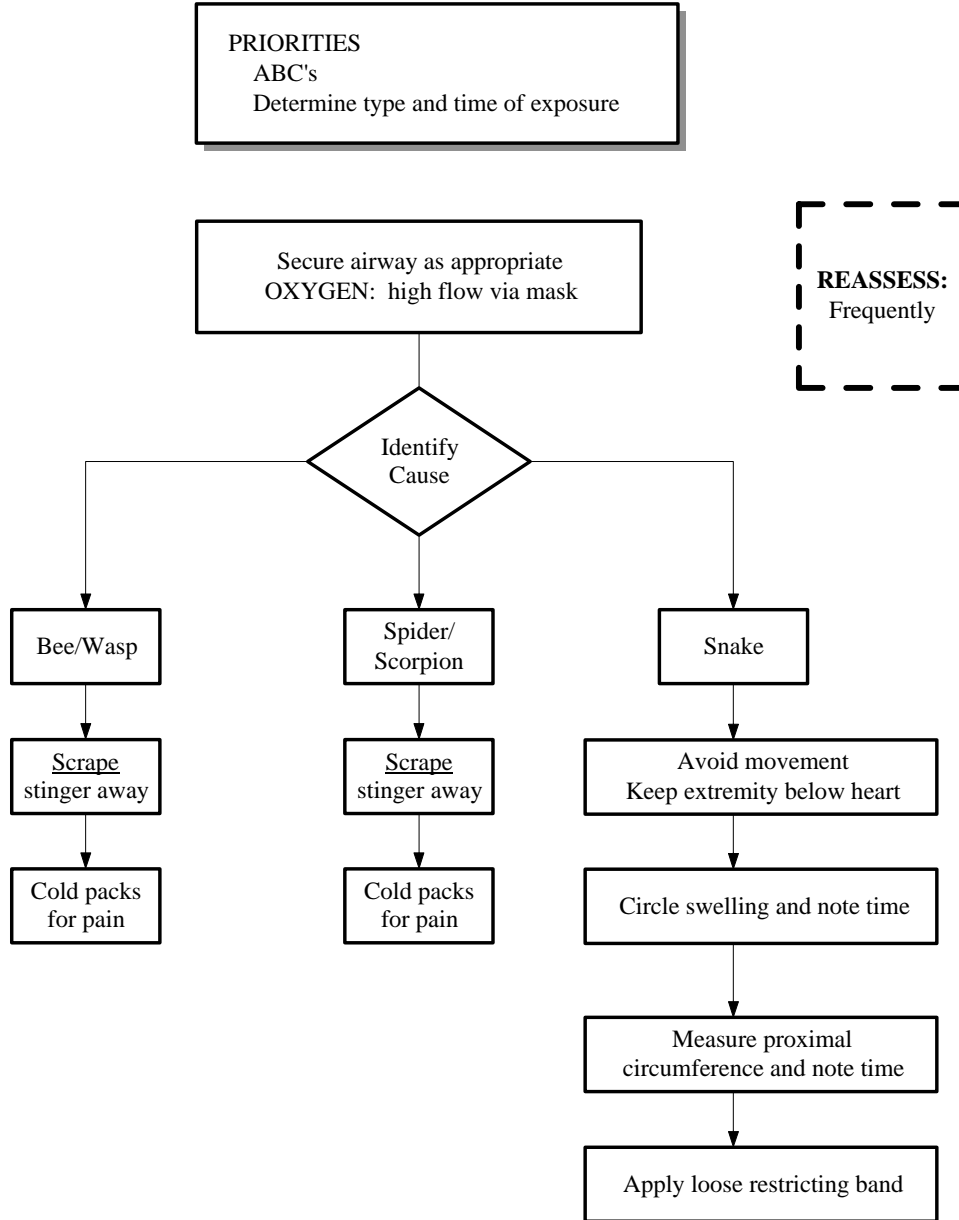
PRIORITIES  
ABC's  
Determine degree of distress  
Determine/Identify Type of Agent, Amount, and  
when Ingested



San Joaquin EMS Agency

**BLS TREATMENT GUIDELINES - ENVIRONMENTAL**

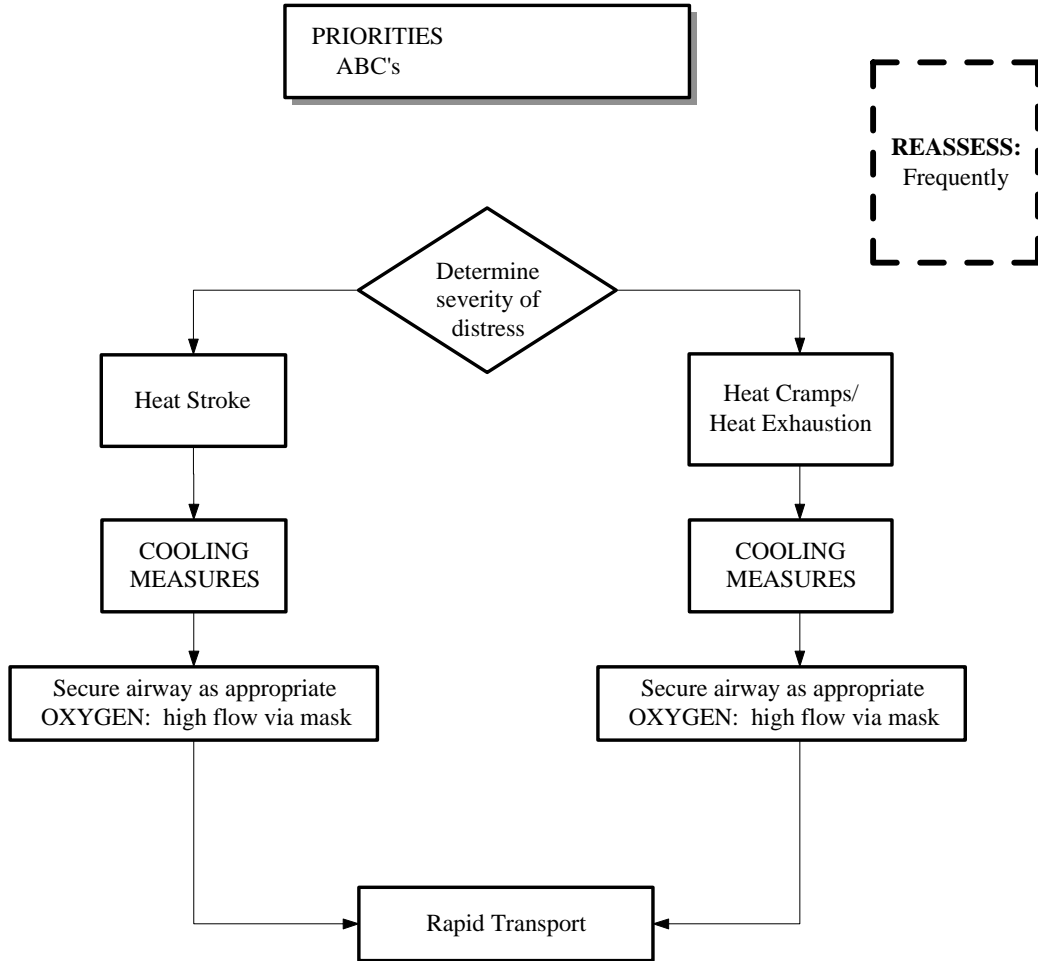
ENVENOMATION (SJ-B501) effective 07/01/99



San Joaquin EMS Agency

**BLS TREATMENT GUIDELINES - ENVIRONMENTAL**

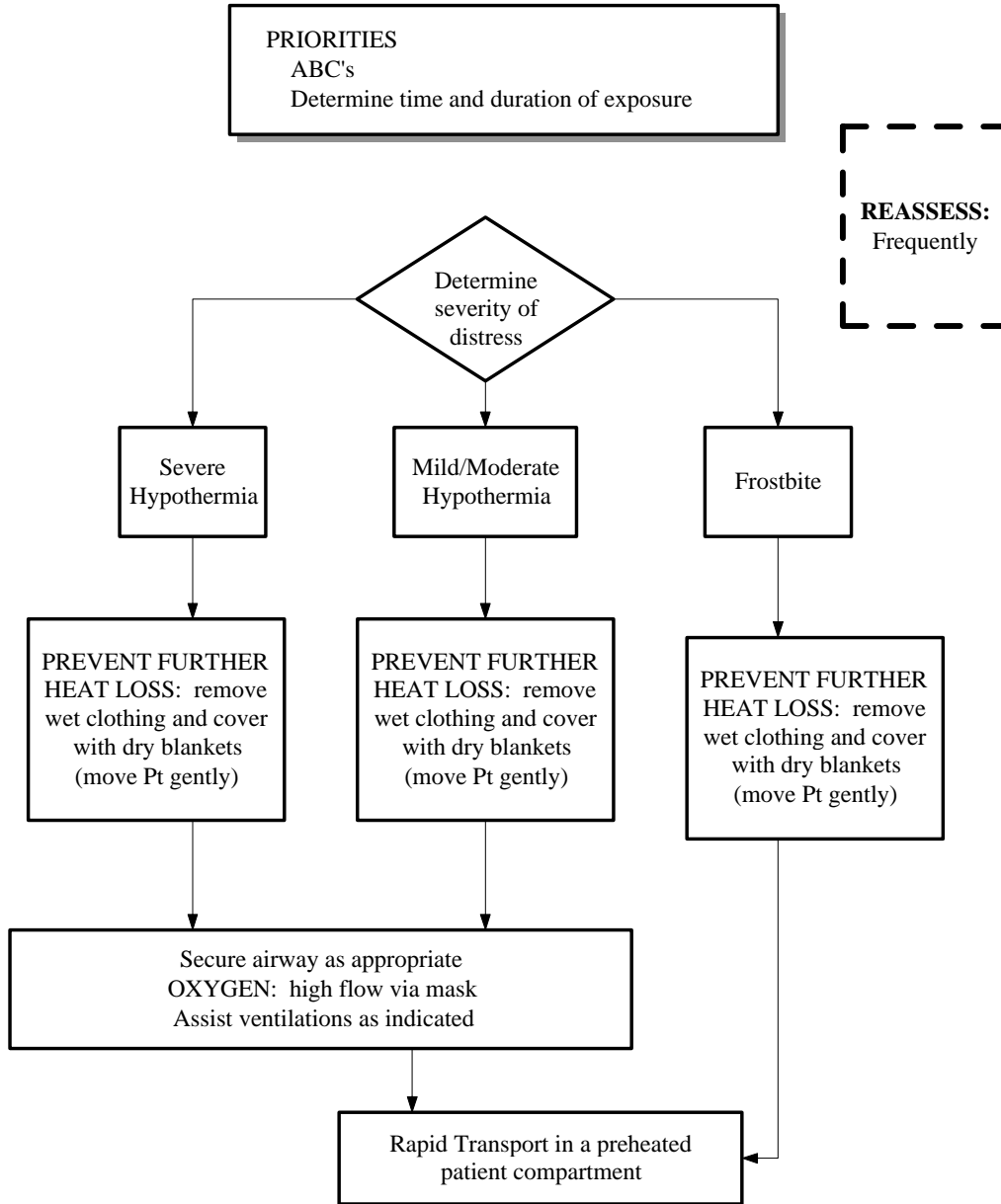
HEAT ILLNESS (SJ-B502) effective 07/01/99



San Joaquin EMS Agency

**BLS TREATMENT GUIDELINES - ENVIRONMENTAL**

**HYPOTHERMIA - FROSTBITE (SJ-B503)** effective 07/01/99



San Joaquin EMS Agency

**BLS TREATMENT GUIDELINES - OBSTETRICS**

**IMMINENT DELIVERY - NORMAL (SJ-B601)** effective 07/01/99

**PRIORITIES**  
ABC's  
Determine trimester of pregnancy  
Estimate blood loss (EBL)

Secure airway as appropriate  
OXYGEN: high flow via mask

**REASSESS:**  
Frequently

DELIVER HEAD: suction mouth/nose

CHECK NECK: for wrapped cord; if present  
- loosen and slip over infant's head, if unable  
- double clamp and cut between clamps

PROCEED WITH DELIVERY:

DRY INFANT

WRAP: in warm, dry, cloth or place on mom  
and cover

CUT & CLAMP: six (6) inches from baby

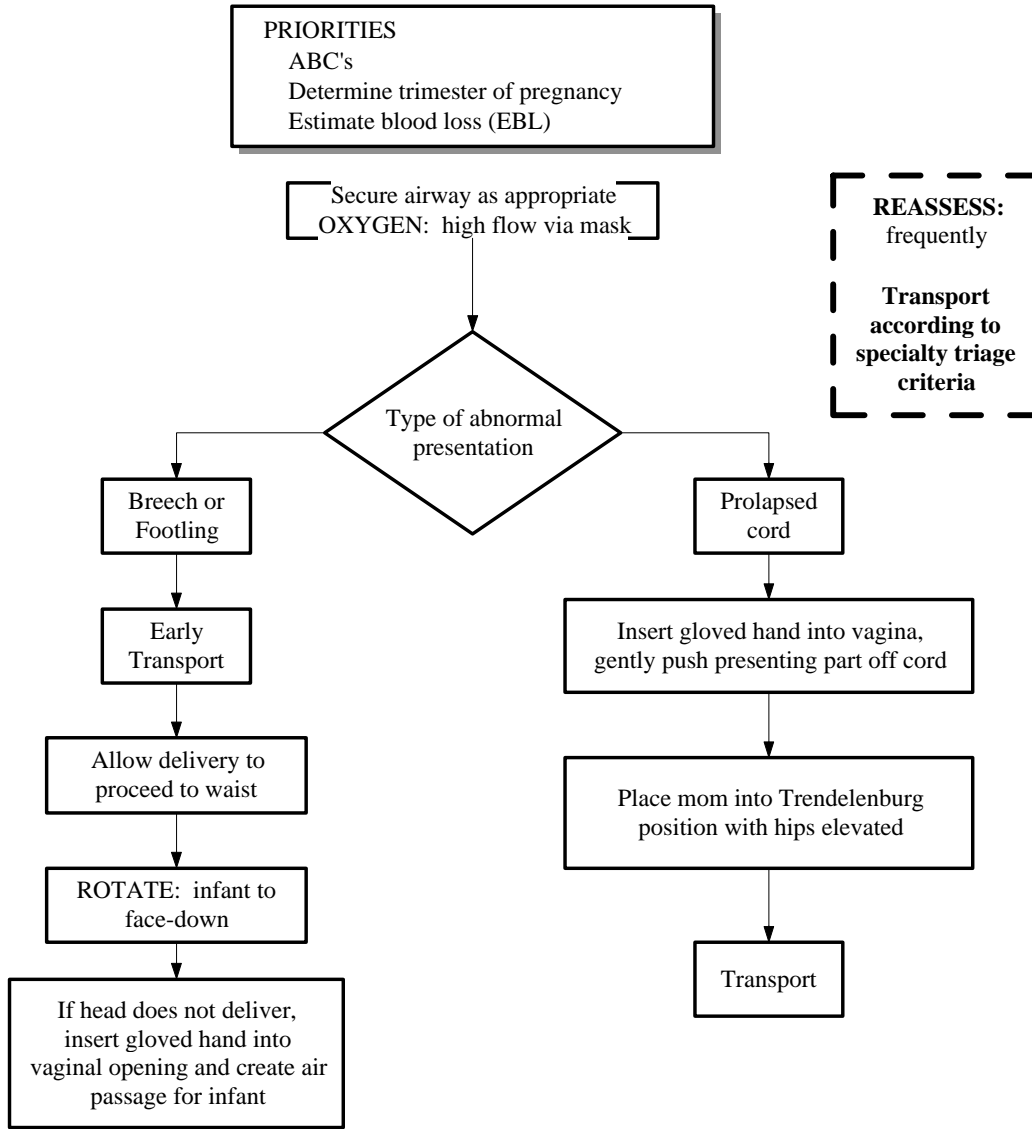
APGAR's: at one (1) & five (5) min.

ALLOW DELIVERY OF PLACENTA

San Joaquin EMS Agency

**BLS TREATMENT GUIDELINES - OBSTETRICS**

**IMMINENT DELIVERY - COMPLICATED (SJ-B602)** effective 07/01/99

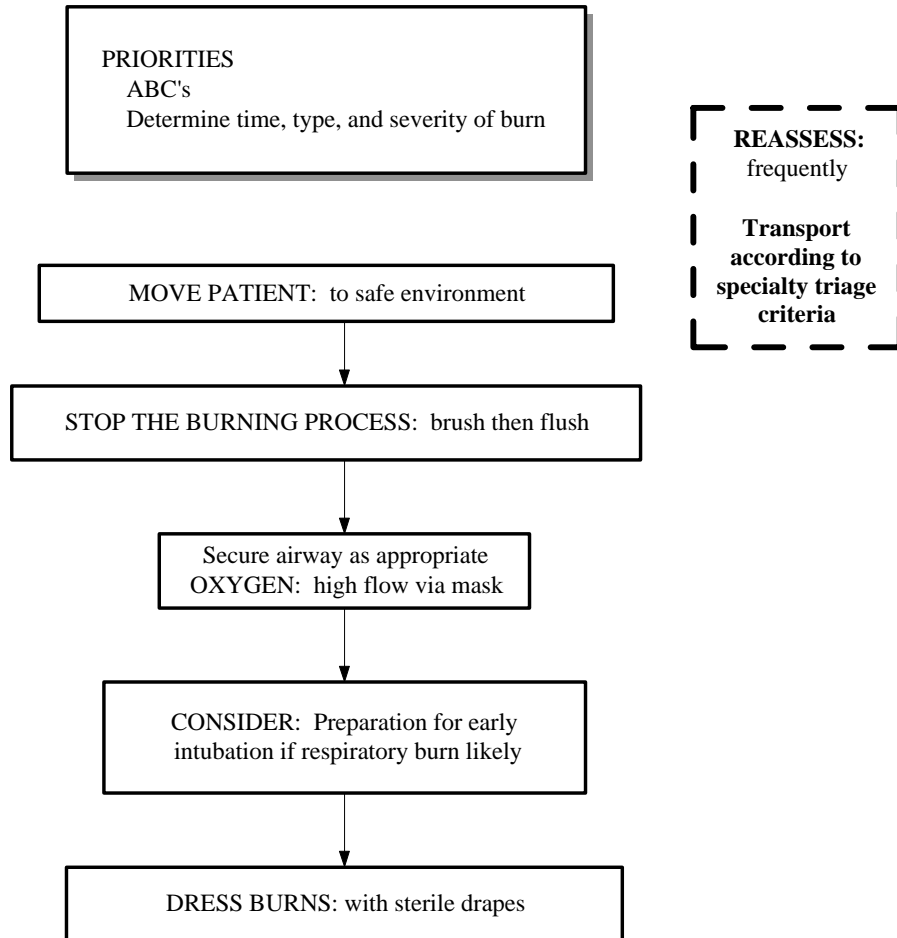


Special Note: If mother is toxemic and/or actively seizing, reduce stimuli (e.g., no sirens, etc.)

San Joaquin EMS Agency  
BLS TREATMENT GUIDELINES - TRAUMA

---

**BURNS (SJ-B701)** effective 07/01/99



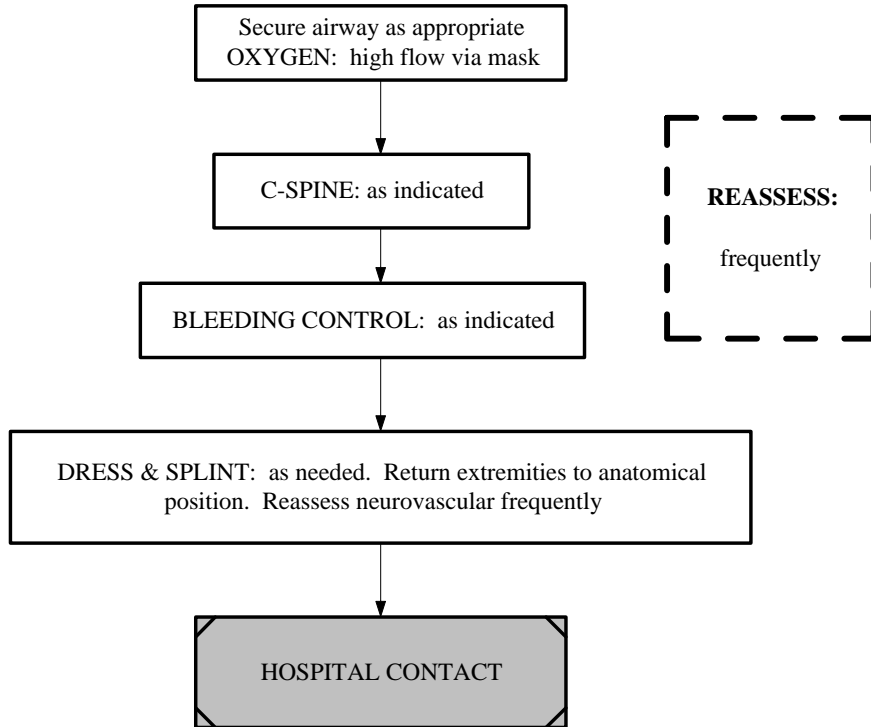
San Joaquin EMS Agency  
BLS TREATMENT GUIDELINES - TRAUMA

---

**TRAUMATIC SHOCK (SJ-B702)** effective 07/01/99

**PRIORITIES**

- ABC's
- Determine mechanism of injury
- Load and Go: to appropriate facility by best method available
- Early Base notification for surgical mobilization

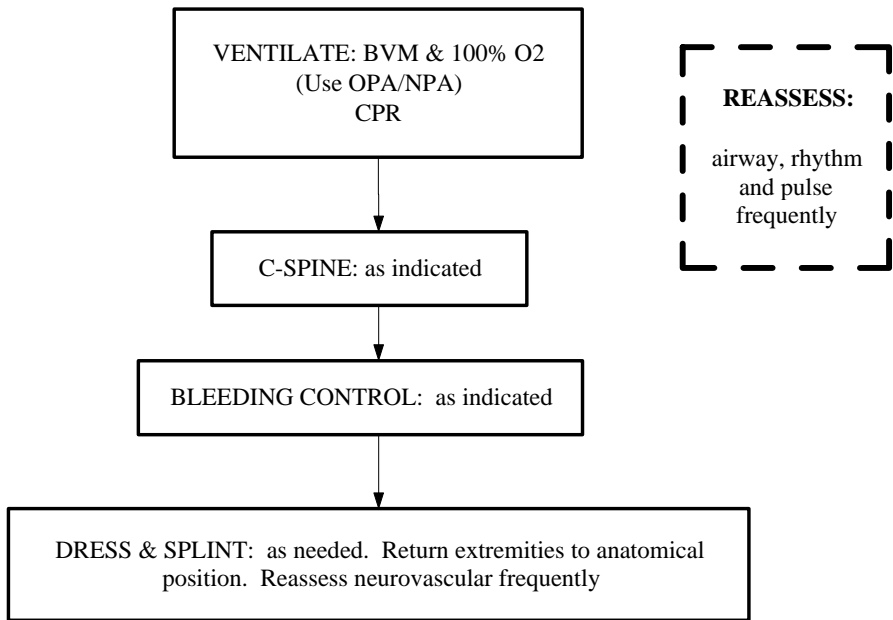


San Joaquin EMS Agency  
BLS TREATMENT GUIDELINES - TRAUMA

---

TRAUMATIC ARREST (SJ-B703) effective 07/01/99

PRIORITIES  
ABC's  
Determine mechanism of injury  
**Load and Go:** to appropriate facility by best method available  
Early HOSPITAL notification for surgical mobilization

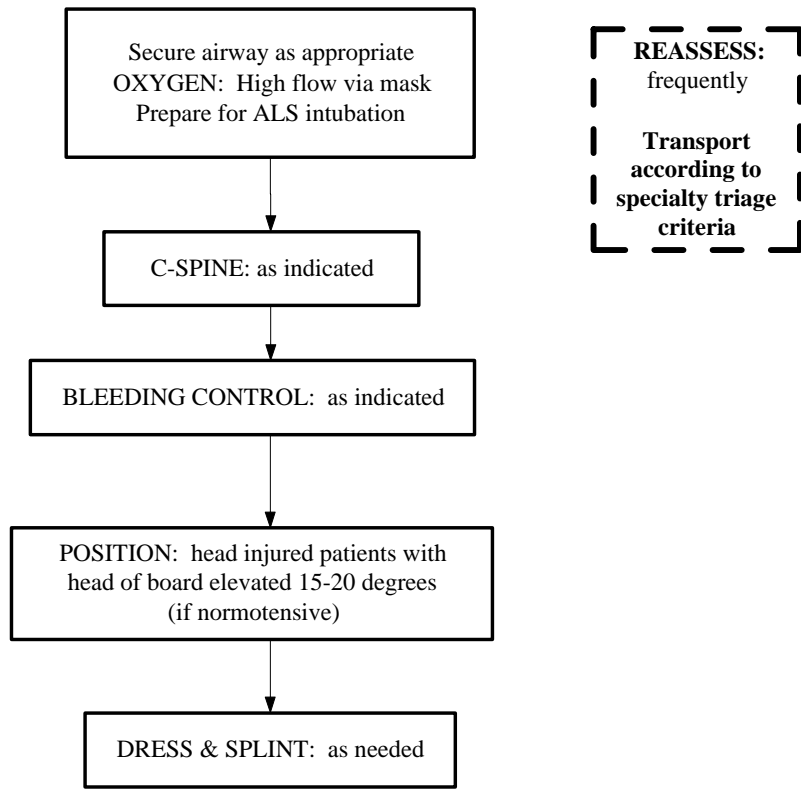


San Joaquin EMS Agency  
BLS TREATMENT GUIDELINES - TRAUMA

---

**HEAD - NECK - FACIAL TRAUMA (SJ-B704)** effective 07/01/99

**PRIORITIES**  
ABC's  
Determine mechanism of injury  
Consider Load and Go: to appropriate facility by best method available  
Early Base notification for surgical mobilization

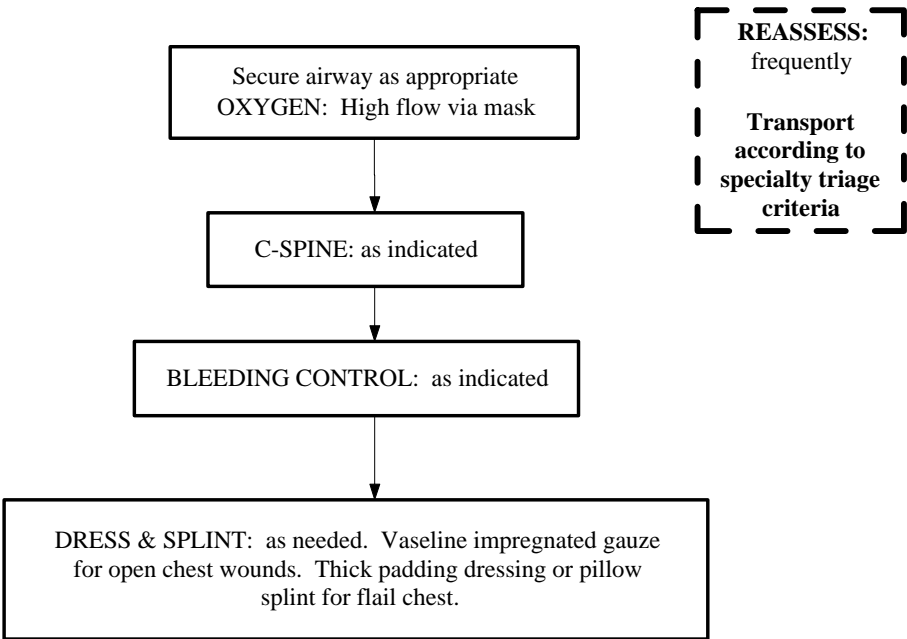


San Joaquin EMS Agency  
BLS TREATMENT GUIDELINES - TRAUMA

---

**CHEST TRAUMA (SJ-B705)** effective 07/01/99

**PRIORITIES**  
ABC's  
Determine mechanism of injury  
Load and Go: to appropriate facility by best method available  
Early Base notification for surgical mobilization

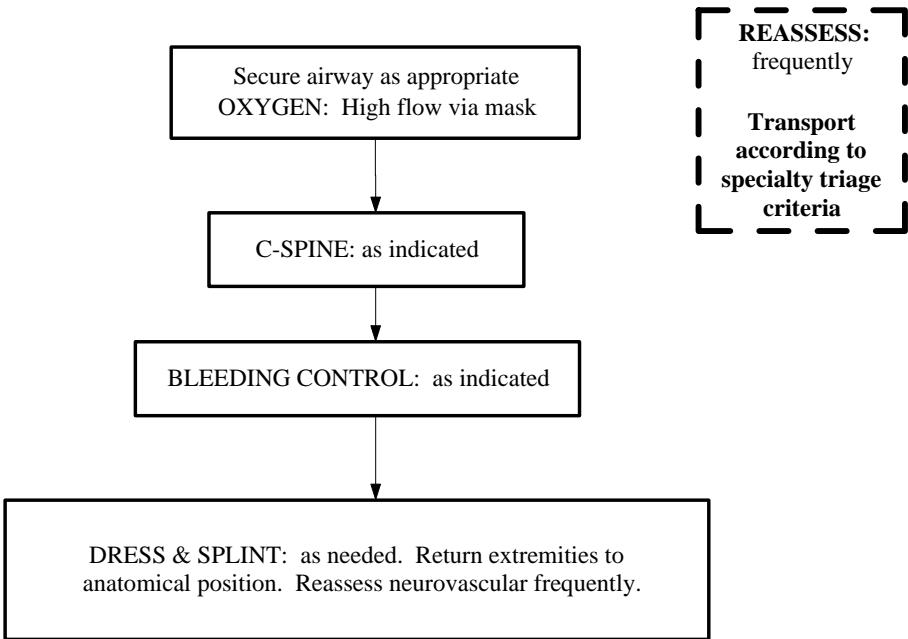


San Joaquin EMS Agency  
BLS TREATMENT GUIDELINES - TRAUMA

---

**ABDOMINAL TRAUMA (SJ-B706)** effective 07/01/99

**PRIORITIES**  
ABC's  
Determine mechanism of injury  
Load and Go: to appropriate facility by best method available  
Early Base notification for surgical mobilization



San Joaquin EMS Agency  
BLS TREATMENT GUIDELINES - TRAUMA

---

EXTREMITY TRAUMA (SJ-B707) effective 07/01/99

PRIORITIES

- ABC's
- Determine mechanism of injury
- Load and Go: to appropriate facility by best method available
- Early Base notification for surgical mobilization

