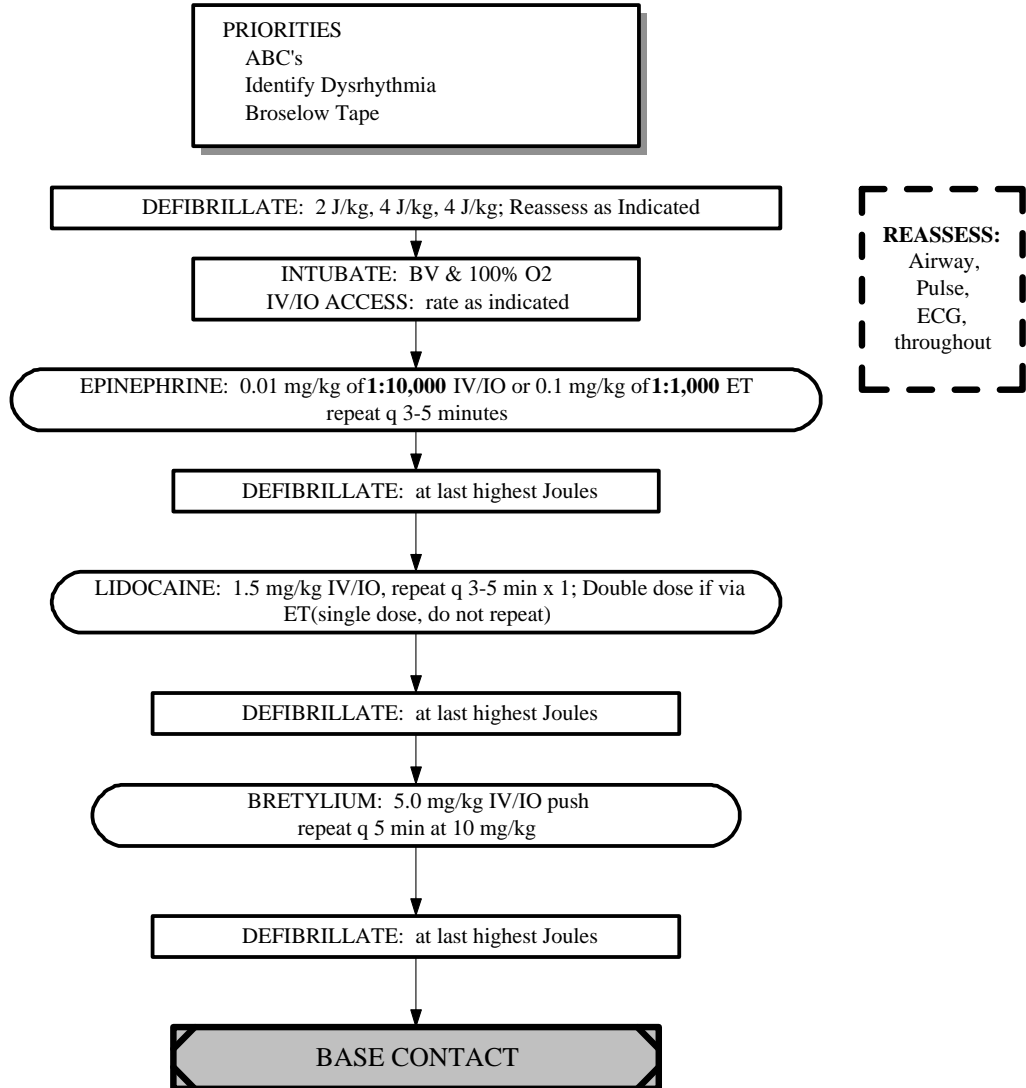


San Joaquin EMS Agency

PEDIATRIC TREATMENT GUIDELINES - CARDIAC

VENTRICULAR FIBRILLATION - PULSELESS VENTRICULAR TACHYCARDIA (SJ-PO1) effective 05/01/02

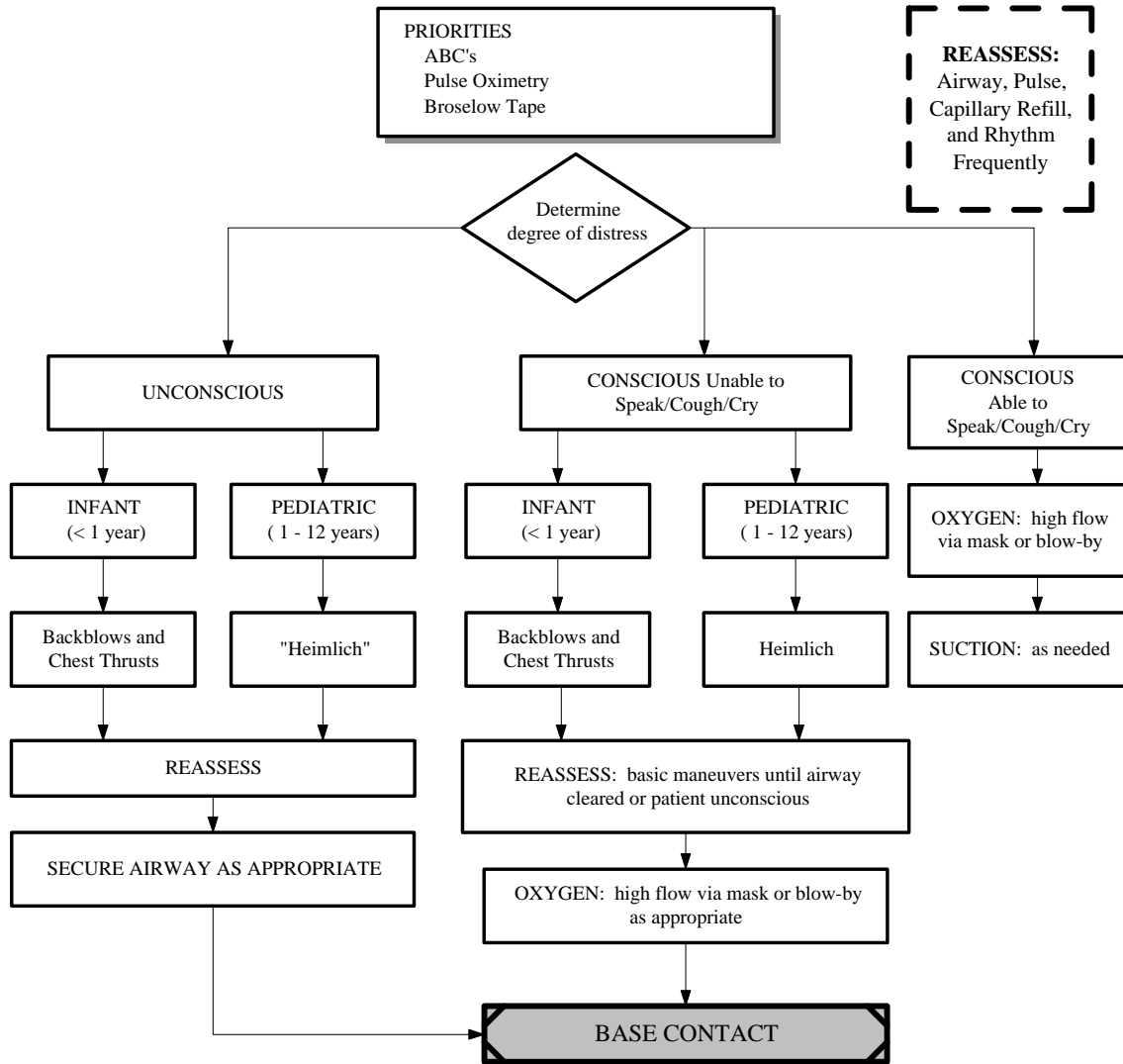
Revision #5
04/19/02



San Joaquin EMS Agency

BLS PEDIATRIC TREATMENT GUIDELINES - RESPIRATORY

AIRWAY OBSTRUCTION - FOREIGN BODY (SJ-P01-B) effective 07/01/99

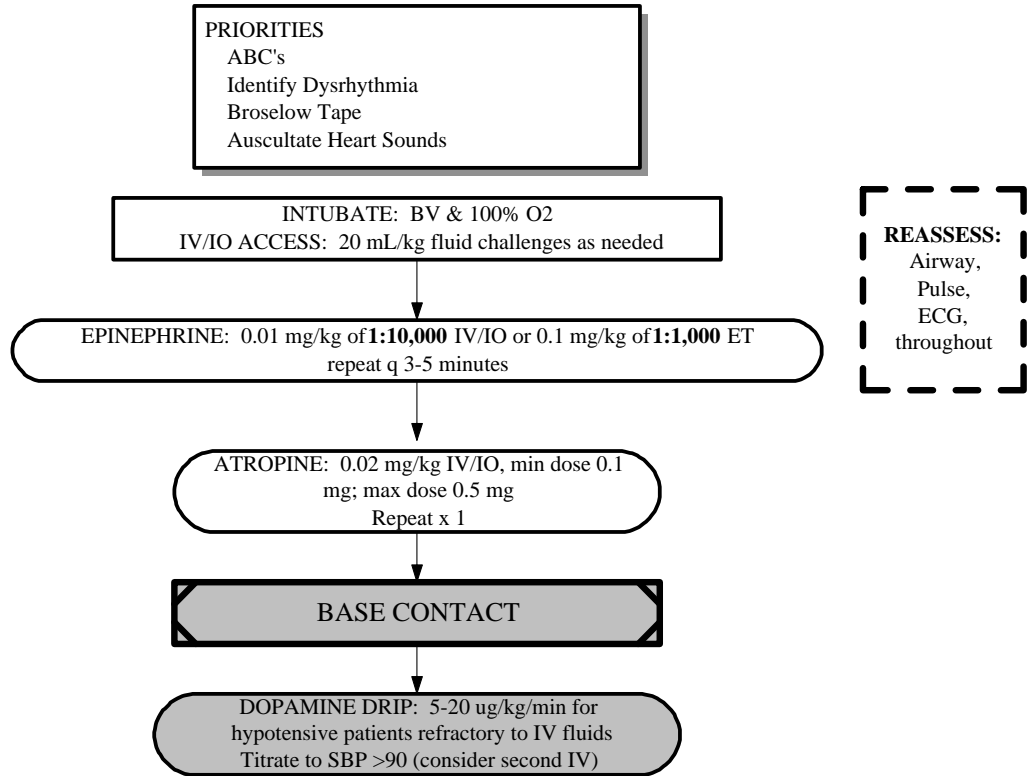


San Joaquin EMS Agency

PEDIATRIC TREATMENT GUIDELINES - CARDIAC

PULSELESS ELECTRICAL ACTIVITY (SJ-PO2) effective 05/01/02

Revision #5
04/19/02



San Joaquin EMS Agency

PEDIATRIC TREATMENT GUIDELINES - CARDIAC

ASYSTOLE (SJ-PO3) effective 05/01/02

Revision #5
04/19/02

PRIORITIES
 ABC's
 Identify Dysrhythmia
 Broselow Tape
Define in two (2) leads minimum
 Consider Causes:
 Acidosis - adequate ventilation
 Hypoxia - provide ventilation
 Hypothermia - refer to guideline A62
 Drug Overdose - refer to guidelines A51-A56
 Hypokalemia -
 Hyperkalemia - Sodium Bicarbonate,
 1 mEq/kg IV/IO (after base contact)

REASSESS:
 Airway,
 Pulse,
 ECG,
 throughout

INTUBATE: BV & 100% O2
 IV/IO ACCESS: rate as indicated

EPINEPHRINE: 0.01 mg/kg of **1:10,000** IV/IO or 0.1 mg/kg of **1:1,000** ET
 repeat q 3-5 minutes

ATROPINE: 0.02 mg/kg IV/IO, min dose 0.1 mg; max dose 0.5 mg
 Repeat x 1

BASE CONTACT

CONSIDER
 TERMINATION OF EFFORTS (**PER BASE PHYSICIAN**): if patient remains in Asystole after intubation and initial medications, if no reversible causes are identified.

San Joaquin EMS Agency

PEDIATRIC TREATMENT GUIDELINES - CARDIAC

BRADYCARDIA (SJ-PO4) effective 09/01/95

Revision #5
09/15/95

PRIORITIES
 ABC's
 Identify Dysrhythmia
 Broselow Tape
 Determine degree of physiologic distress

OXYGEN: high flow via mask
IV/IO ACCESS: 20 mL/kg fluid challenges as needed

REASSESS:
 Airway, Pulse,
 Capillary Refill,
 and Rhythm
 Frequently

ASSESS FOR SYMPTOMS RELATED TO HYPOPERFUSION:
 (HR < 80 infant/ HR < 60 pediatric)
 poor perfusion, dyspnea, weak pulses, cool extremities, ALOC

IF PRESENT

CPR: at 120 compressions/min

EPINEPHRINE: 0.01 mg/kg of **1:10,000** IV/IO or 0.1 mg/kg of **1:1,000** ET
 Repeat q 3-5 min at same dose

BASE CONTACT

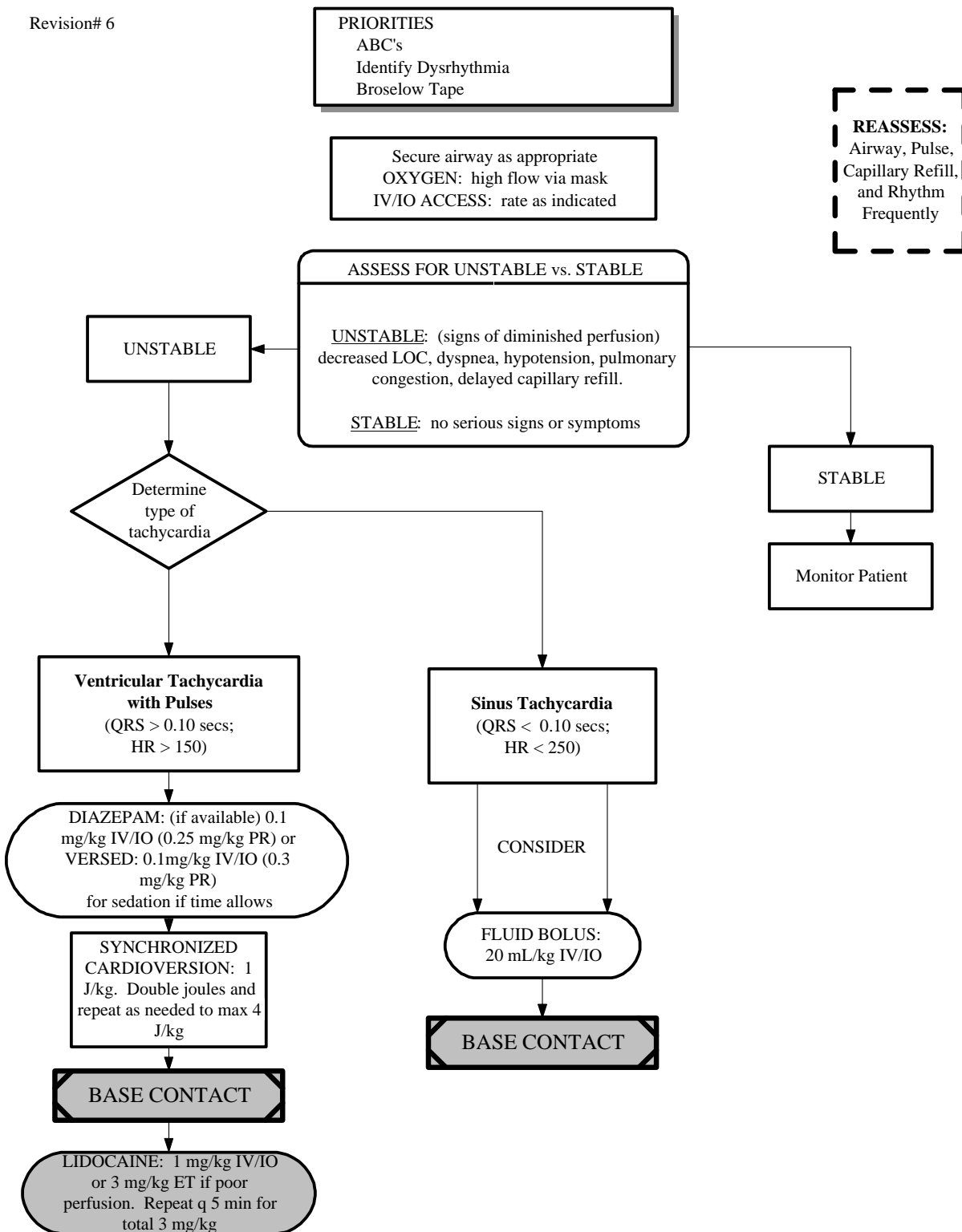
ATROPINE: 0.02 mg/kg IV/IO, min dose 0.1 mg; max dose 0.5 mg
 Repeat x 1

San Joaquin EMS Agency

PEDIATRIC TREATMENT GUIDELINES - CARDIAC

TACHYCARDIA WITH PULSES (SJ-PO5) effective 03/01/02

Revision# 6



San Joaquin EMS Agency

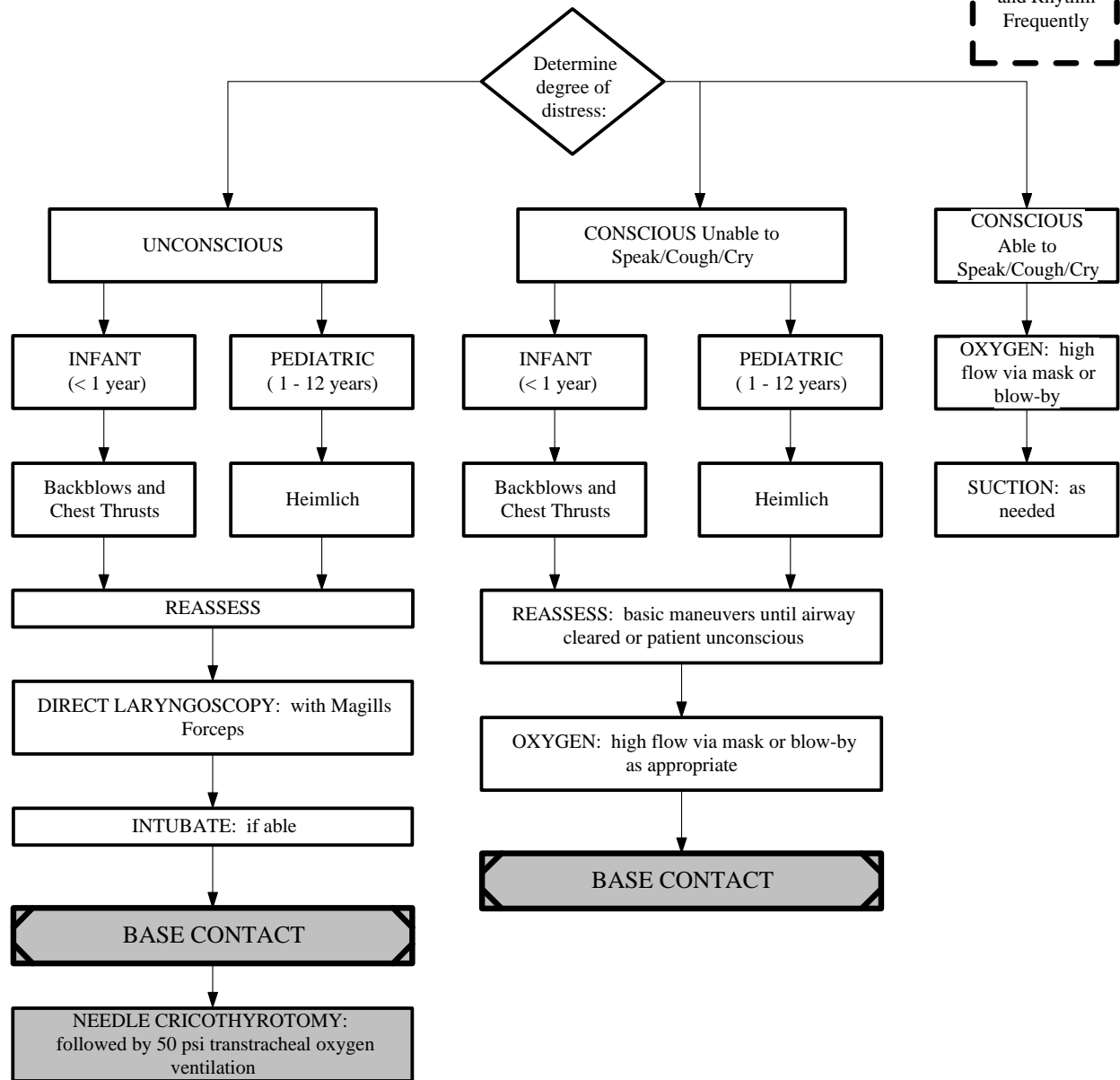
PEDIATRIC TREATMENT GUIDELINES - RESPIRATORY

AIRWAY OBSTRUCTION - FOREIGN BODY (SJ-P21) effective 09/01/95

Revision #3
02/24/95

PRIORITIES
ABC's
Pulse Oximetry
Broselow Tape

REASSESS:
Airway, Pulse,
Capillary Refill,
and Rhythm
Frequently



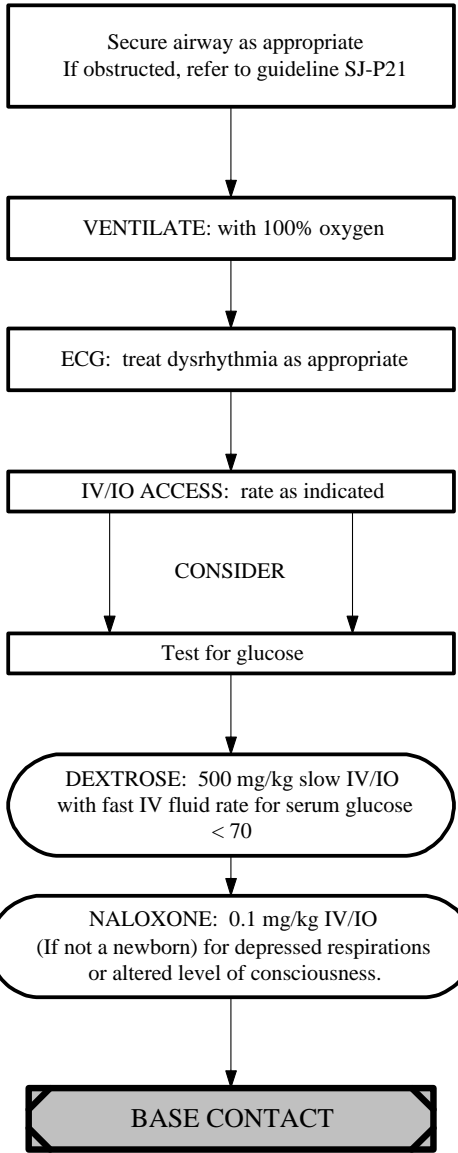
San Joaquin EMS Agency

PEDIATRIC TREATMENT GUIDELINES - RESPIRATORY

RESPIRATORY ARREST (SJ-P22) effective 09/01/95

Revision #3
02/24/95

PRIORITIES
ABC's
Pulse Oximetry
Broselow Tape



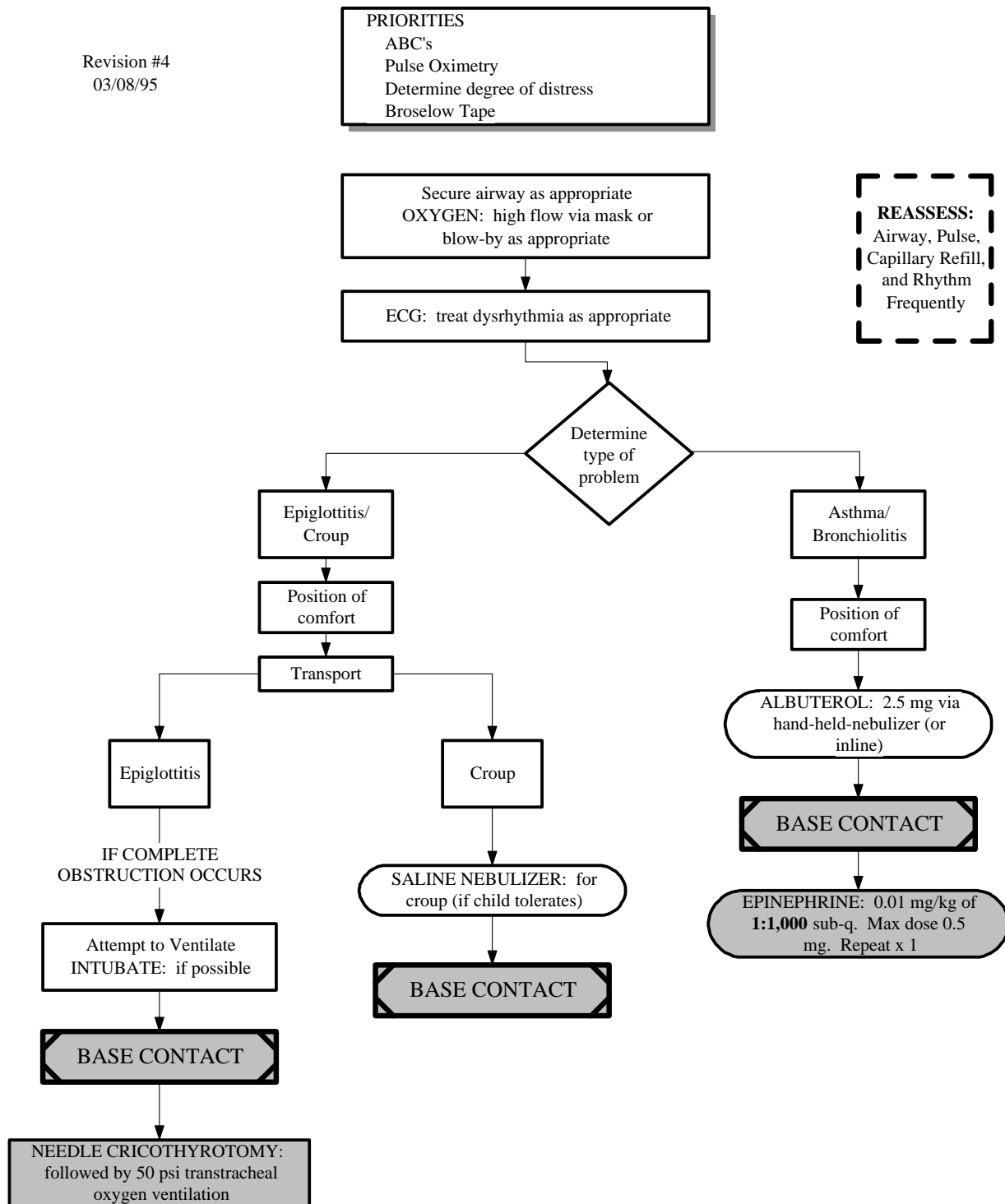
REASSESS:
Airway, Pulse,
Capillary Refill,
and Rhythm
Frequently

San Joaquin EMS Agency

PEDIATRIC TREATMENT GUIDELINES - RESPIRATORY

RESPIRATORY DISTRESS (SJ-P23) effective 09/01/95

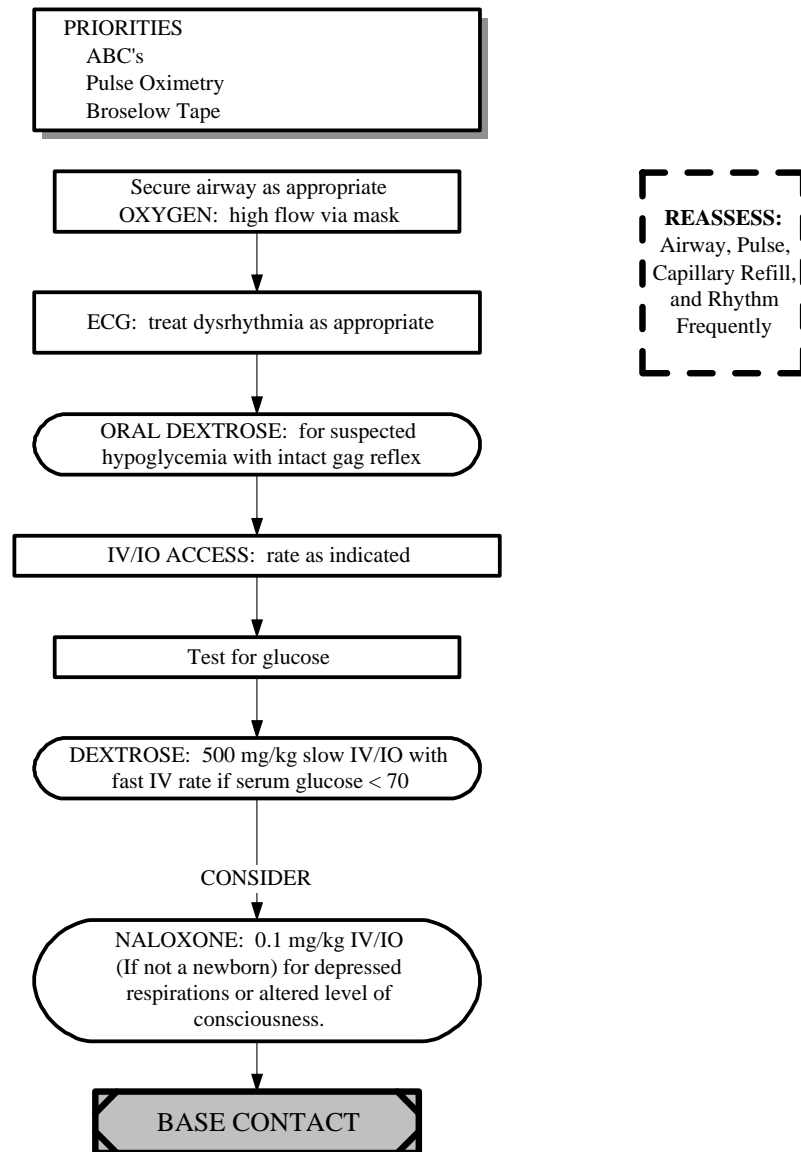
Revision #4
03/08/95



San Joaquin EMS Agency
PEDIATRIC TREATMENT GUIDELINES - NEUROLOGIC

ALTERED LEVEL OF CONSCIOUSNESS (SJ-P31) effective 09/01/95

Revision #3
02/24/95



San Joaquin EMS Agency
PEDIATRIC TREATMENT GUIDELINES - NEUROLOGIC

SEIZURE (SJ-P32) effective 03/01/02

Revision# 3

PRIORITIES
ABC's
Prevent injury
Broselow Tape

Secure airway as appropriate
OXYGEN: high flow via mask or blow-by
as appropriate

IV/IO ACCESS: rate as indicated

DIAZEPAM or VERSED: titrate to 0.1
mg/kg IV/IO for active seizures. May
repeat x1.

OR

DIAZEPAM: 0.5 mg/kg
rectally for active seizures,
max dose 20 mg
or
VERSED: 0.3mg/kg rectally
for active seizure, one dose
only

CONSIDER

Test for glucose

DEXTROSE: 500 mg/kg slow IV/IO with
fast IV rate if serum glucose < 70

ECG: treat dysrhythmia as appropriate

BASE CONTACT

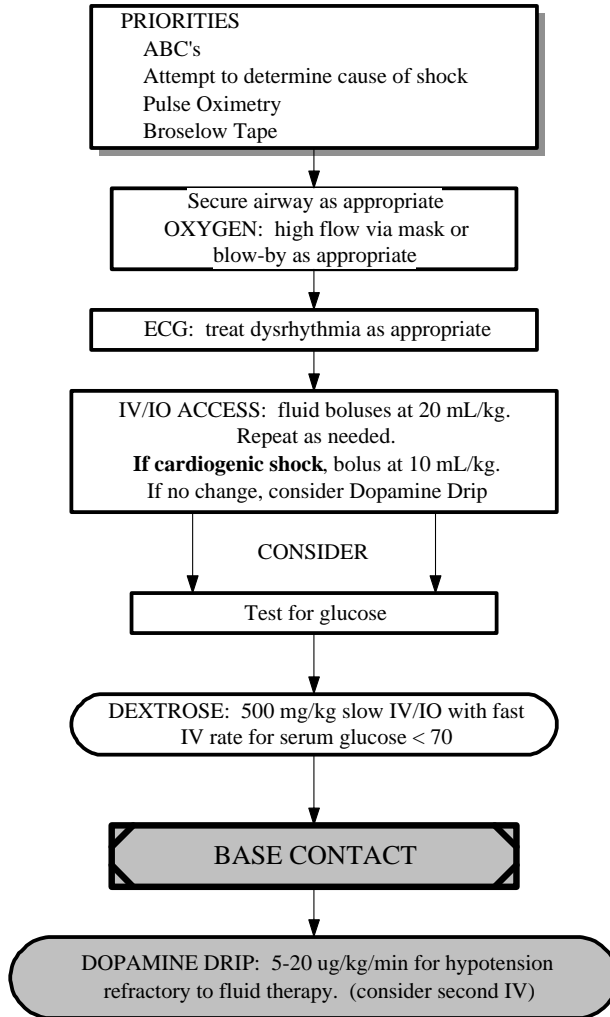
REASSESS:
Airway, Pulse,
Capillary Refill,
and Rhythm
Frequently

San Joaquin EMS Agency

PEDIATRIC TREATMENT GUIDELINES - MEDICAL

SHOCK, NON-TRAUMATIC (SJ-P41) effective 09/01/95

Revision #2
02/02/95



REASSESS:
Airway, Pulse,
Capillary Refill,
and Rhythm
Frequently

San Joaquin EMS Agency

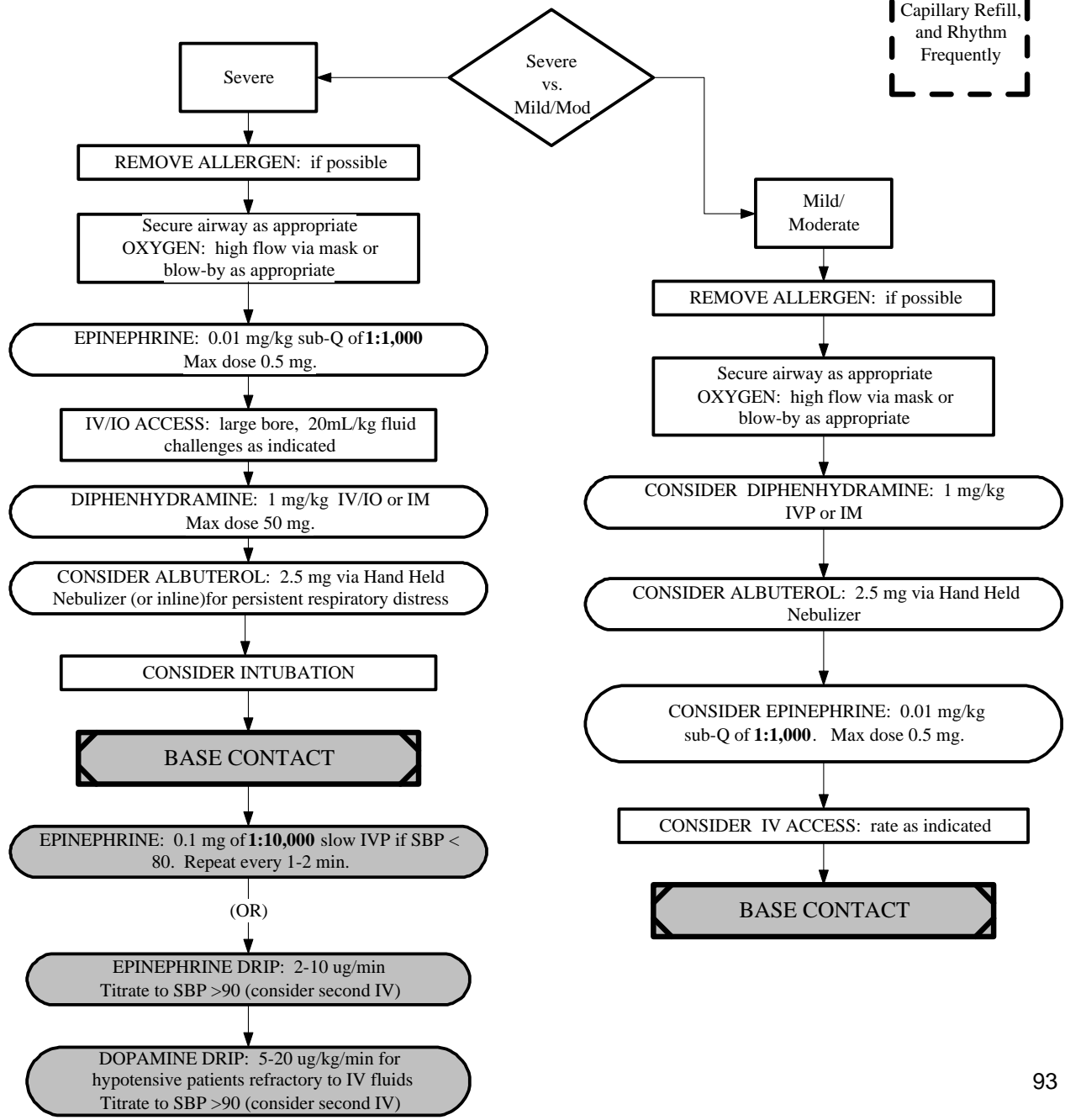
PEDIATRIC TREATMENT GUIDELINES - MEDICAL

ALLERGIC REACTION (SJ-P42) effective 09/01/95

Revision #3
03/08/95

PRIORITIES
ABC's
Pulse Oximetry
Broselow Tape
Determine type of allergen if possible
Determine severity of reaction

REASSESS:
Airway, Pulse,
Capillary Refill,
and Rhythm
Frequently



San Joaquin EMS Agency
PEDIATRIC TREATMENT GUIDELINES - POISONINGS

CAUSTICS - CORROSIVES (SJ-P51) effective 09/01/95

Revision #2
02/02/95

PRIORITIES
Scene Safety - HAZMAT
ABC's
Broselow Tape
Determine type, amount, and when exposure occurred

REMOVE AGENT: brush then flush

DO NOT INDUCE VOMITING: if ingestion occurred

Secure airway as appropriate
OXYGEN: high flow via mask or blow-by as appropriate

CONSIDER: early intubation if respiratory burn likely

ECG: treat dysrhythmia as appropriate

IV/IO ACCESS: rate as indicated

BURN or SHOCK GUIDELINES:
as indicated
Burn = P81
Shock = P41

WATER or MILK: p.o. if ingestion occurred

BASE CONTACT

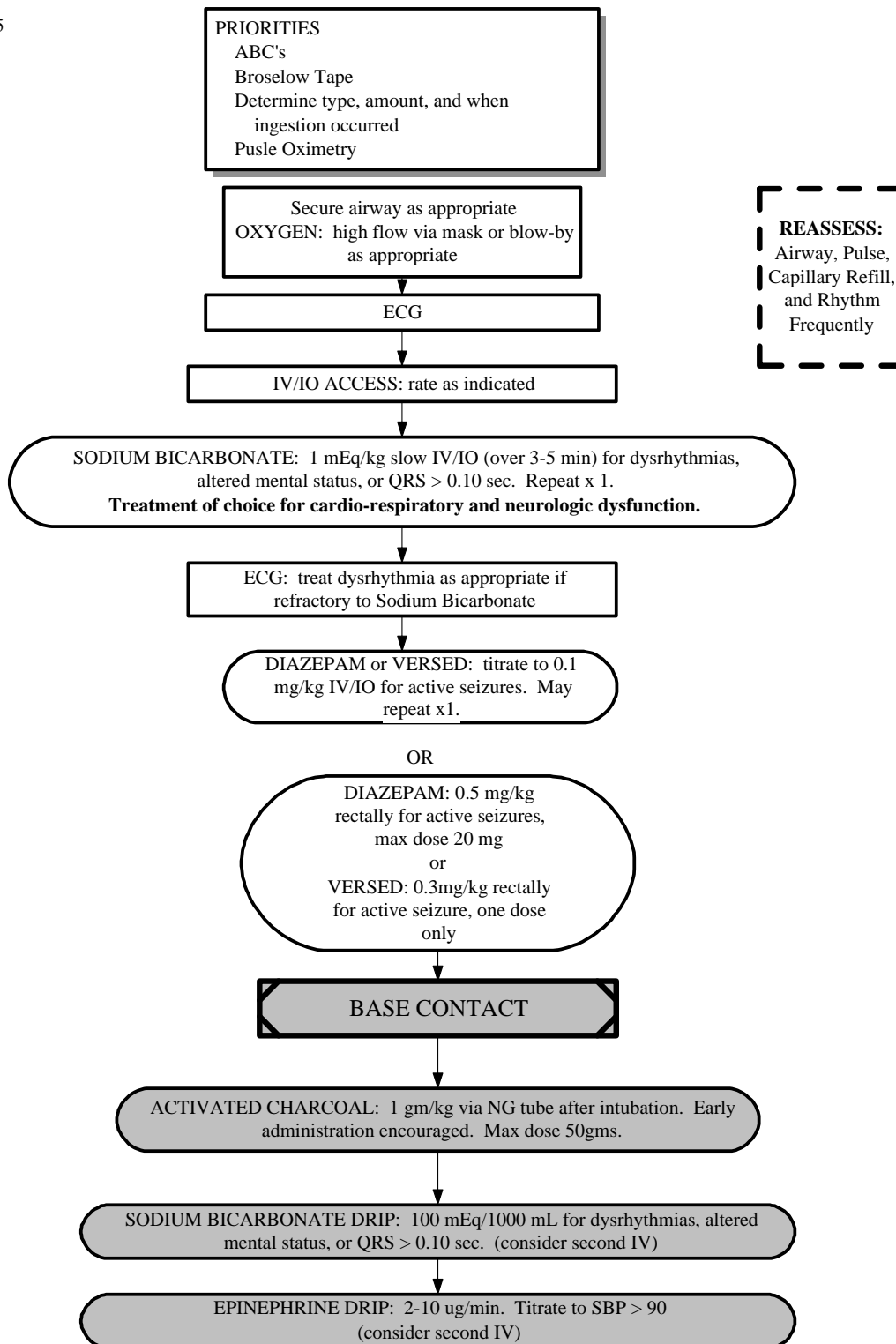
REASSESS:
Airway, Pulse,
Capillary Refill,
and Rhythm
Frequently

San Joaquin EMS Agency

PEDIATRIC TREATMENT GUIDELINES - POISONINGS

CYCLIC ANTIDEPRESSANTS (SJ-P52) effective 03/01/02

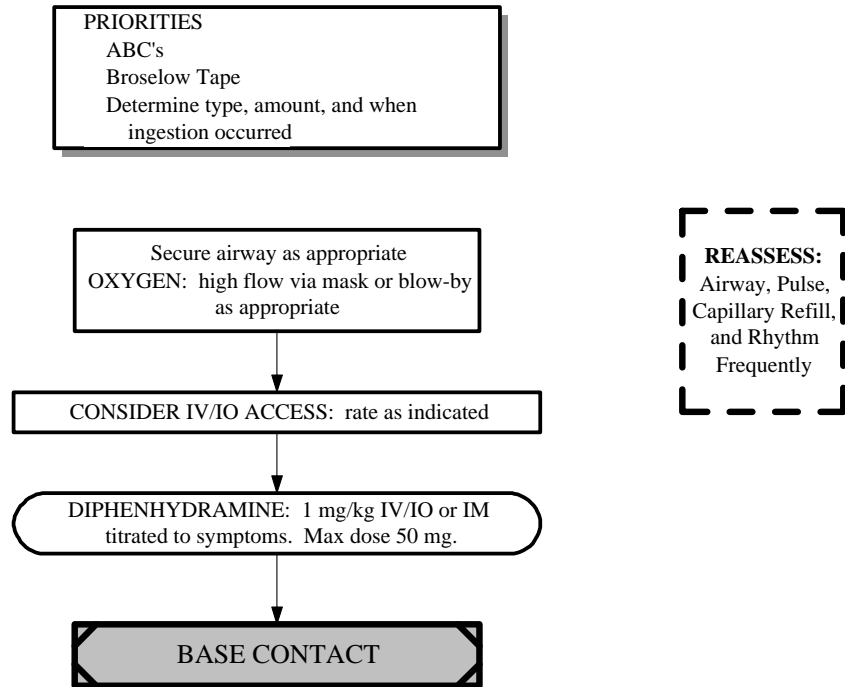
Revision# 5



San Joaquin EMS Agency
PEDIATRIC TREATMENT GUIDELINES - POISONINGS

PHENOTHIAZINE REACTIONS (SJ-P53) effective 09/01/95
(DYSTONIC REACTIONS)

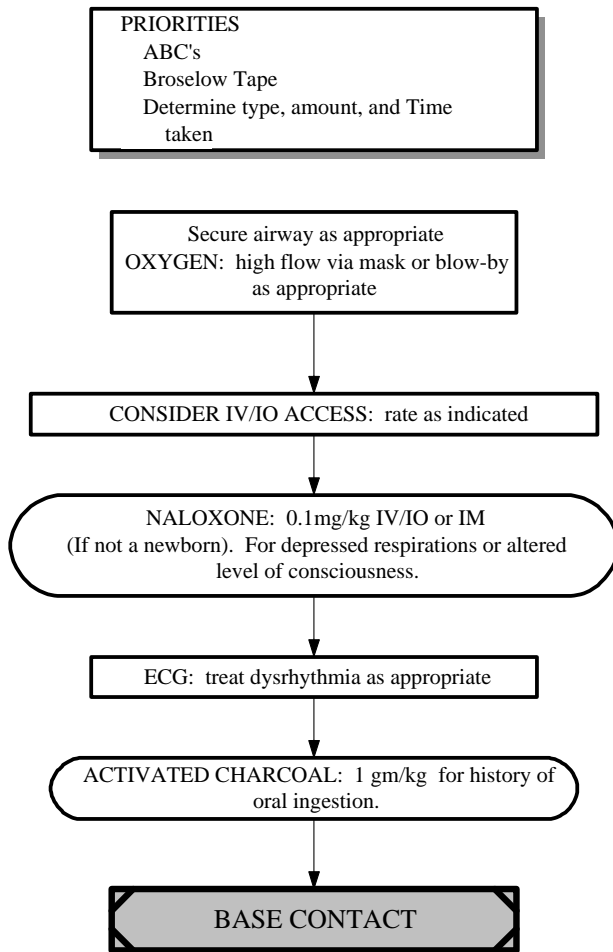
Revision #2
02/02/95



San Joaquin EMS Agency
PEDIATRIC TREATMENT GUIDELINES - POISONINGS

NARCOTICS - SEDATIVES (SJ-P54) effective 09/01/95

Revision #3
02/24/95



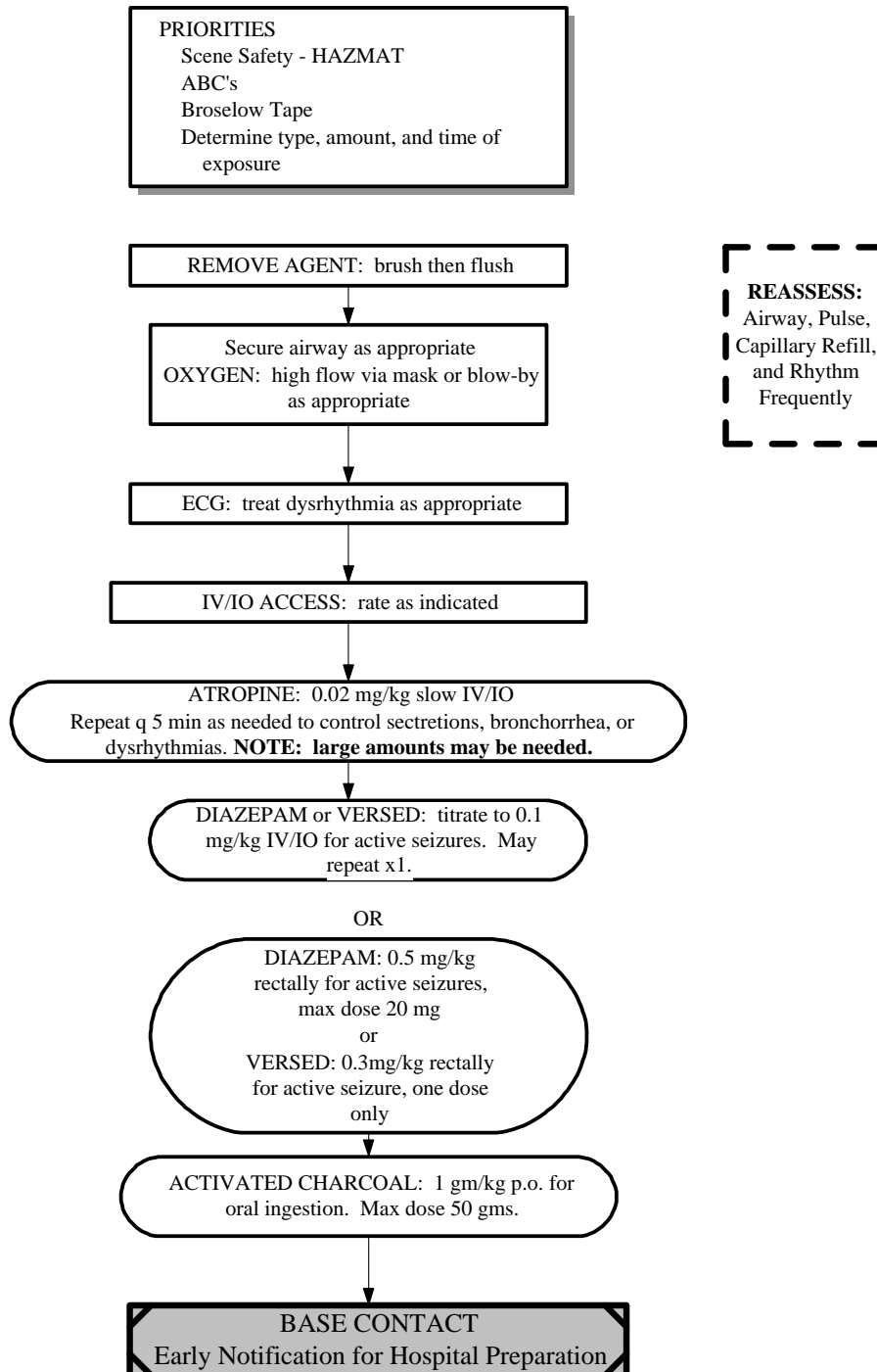
REASSESS:
Airway, Pulse,
Capillary Refill,
and Rhythm
Frequently

San Joaquin EMS Agency

PEDIATRIC TREATMENT GUIDELINES - POISONINGS

ORGANOPHOSPHATES (SJ-P55) effective 03/01/02

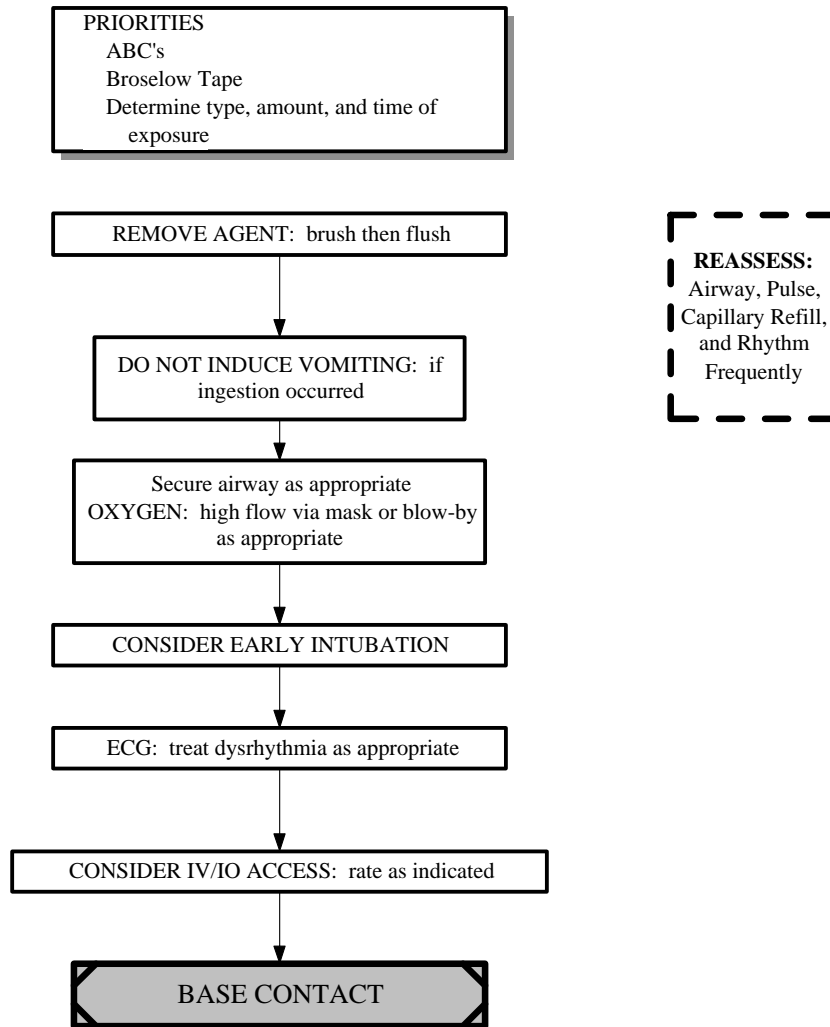
Revision# 3



San Joaquin EMS Agency
PEDIATRIC TREATMENT GUIDELINES - POISONINGS

PETROLEUM DISTILLATES (SJ-P56) effective 09/01/95

Revision #2
02/02/95

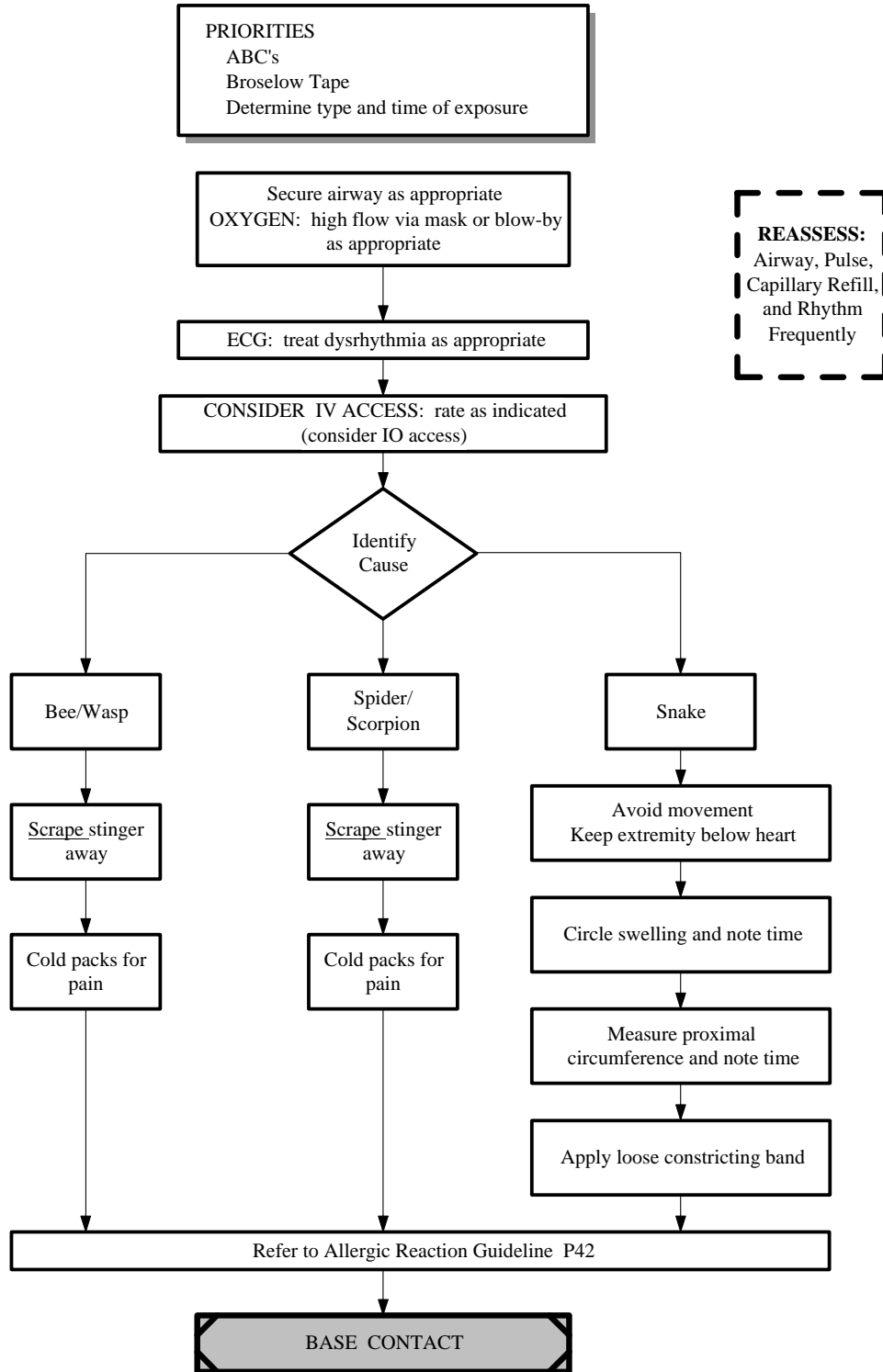


San Joaquin EMS Agency

PEDIATRIC TREATMENT GUIDELINES - ENVIRONMENTAL

ENVENOMATION (SJ-P61) effective 09/01/95

Revision #4
09/15/95



San Joaquin EMS Agency

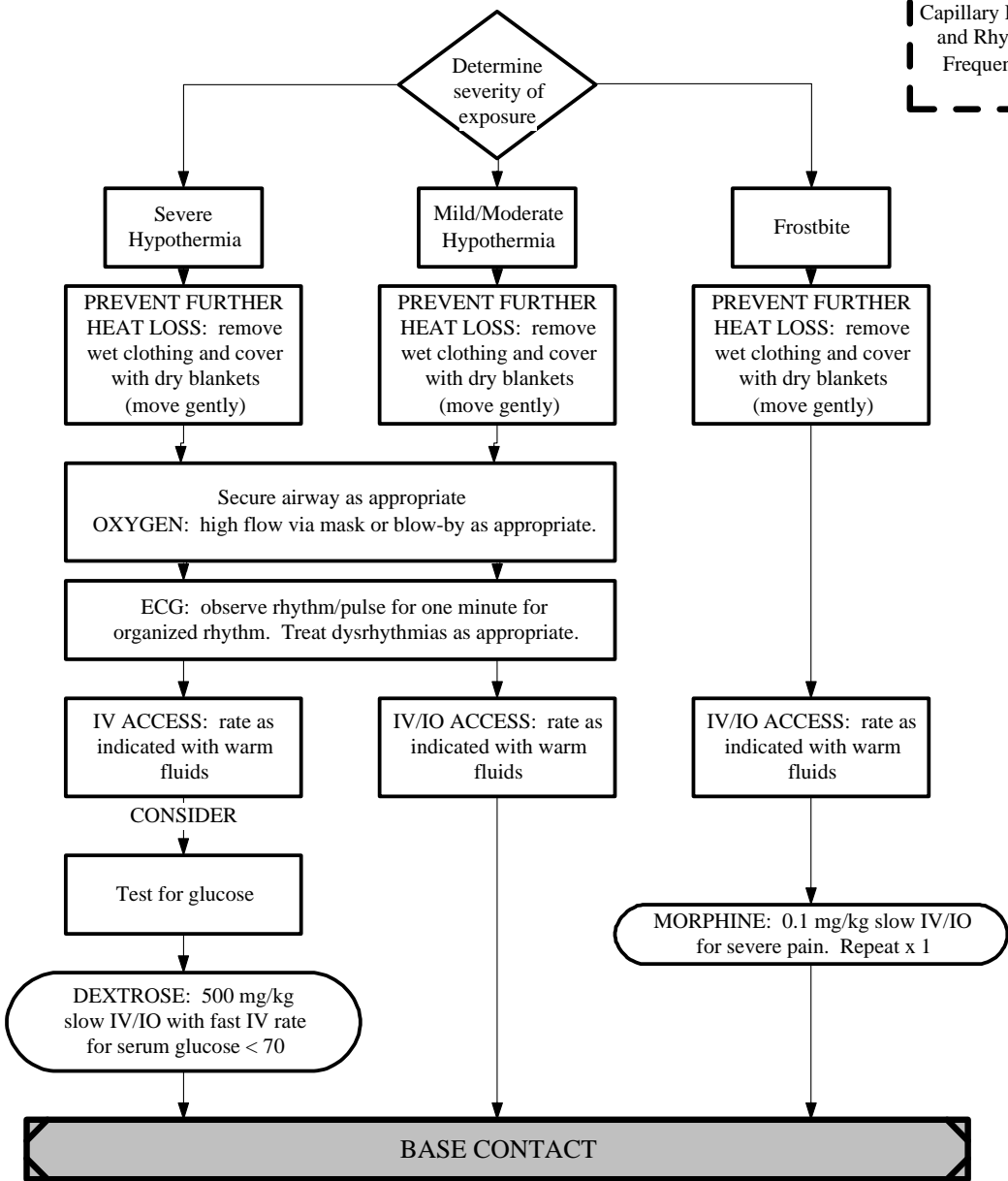
PEDIATRIC TREATMENT GUIDELINES - ENVIRONMENTAL

HYPOTHERMIA - FROSTBITE (SJ-P62) effective 09/01/95

Revision #4
09/15/95

PRIORITIES
ABC's
Broselow Tape
Determine time and duration of exposure

REASSESS:
Airway, Pulse,
Capillary Refill,
and Rhythm
Frequently

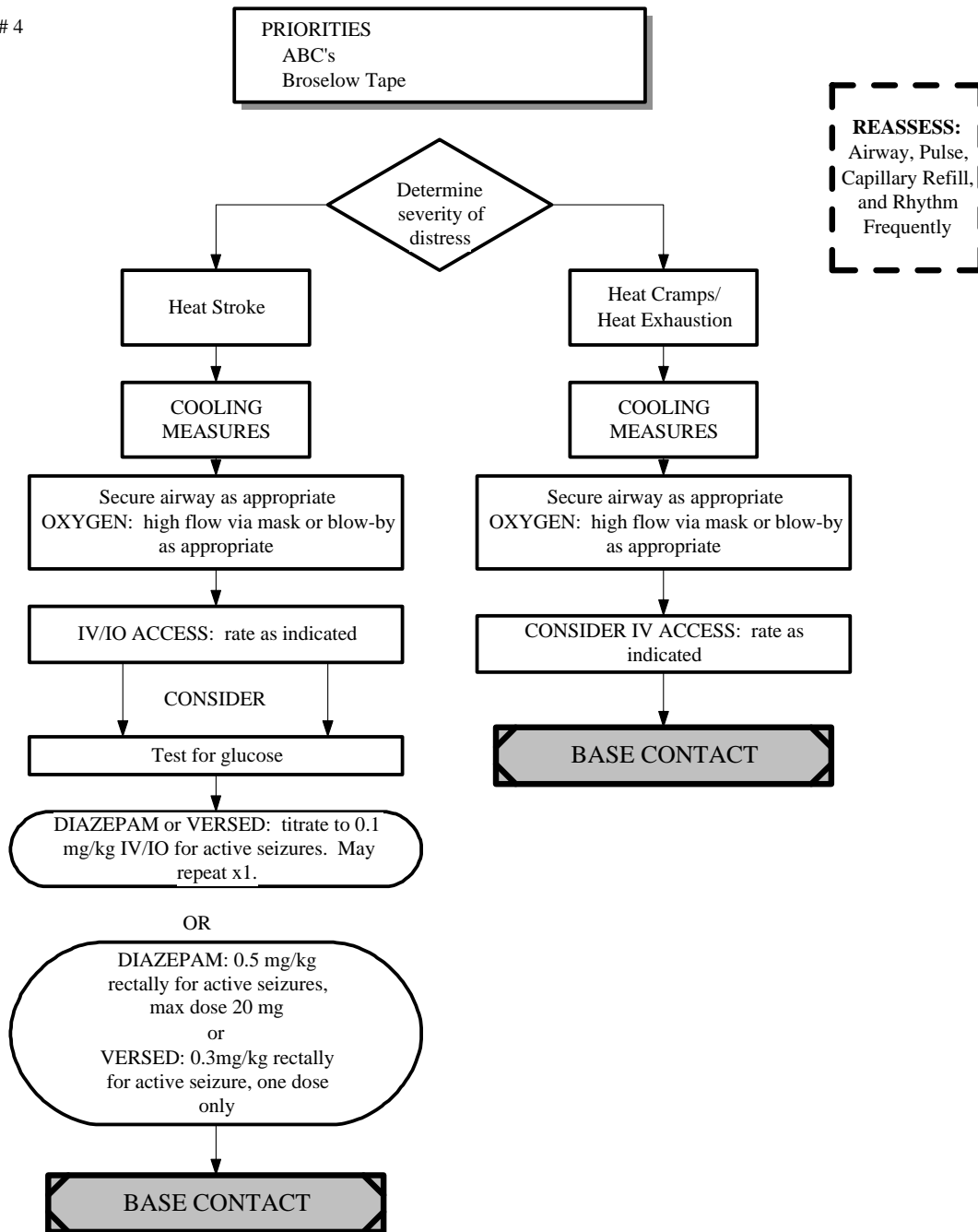


San Joaquin EMS Agency

PEDIATRIC TREATMENT GUIDELINES - ENVIRONMENTAL

HEAT ILLNESS (SJ-P63) effective 03/01/02

Revision# 4

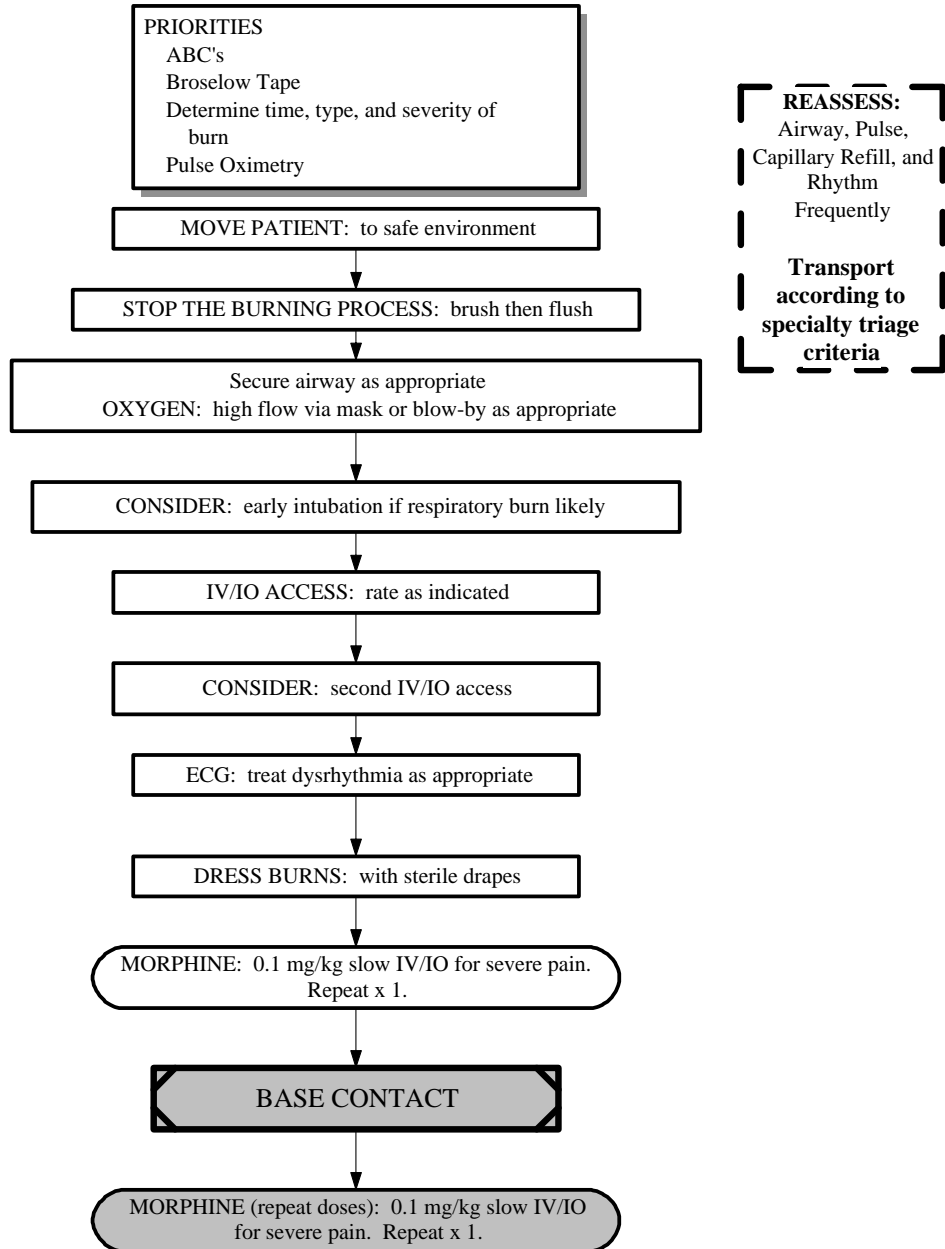


San Joaquin EMS Agency

PEDIATRIC TREATMENT GUIDELINES - TRAUMA

BURNS (SJ-P81) effective 09/01/95

Revision #2
02/09/95



REASSESS:
Airway, Pulse,
Capillary Refill, and
Rhythm
Frequently

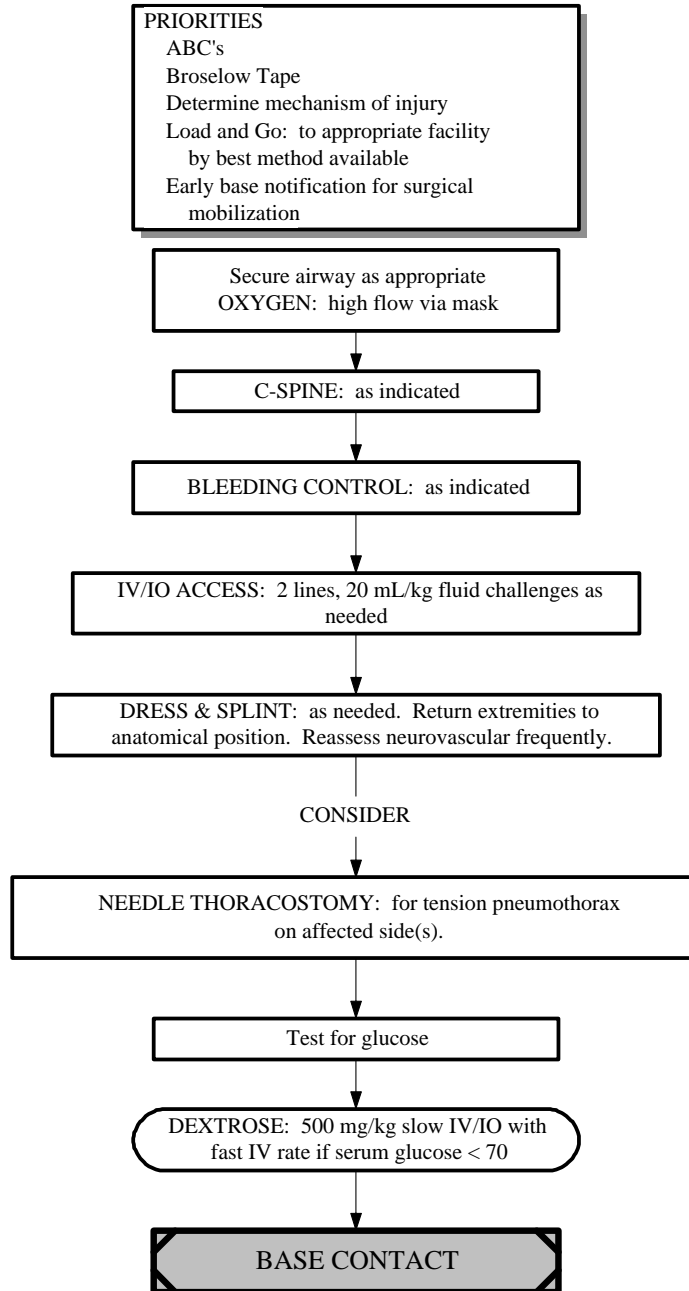
Transport
according to
specialty triage
criteria

San Joaquin EMS Agency

PEDIATRIC TREATMENT GUIDELINES - TRAUMA

TRAUMATIC SHOCK (SJ-P82) effective 09/01/95

Revision #2
02/09/95



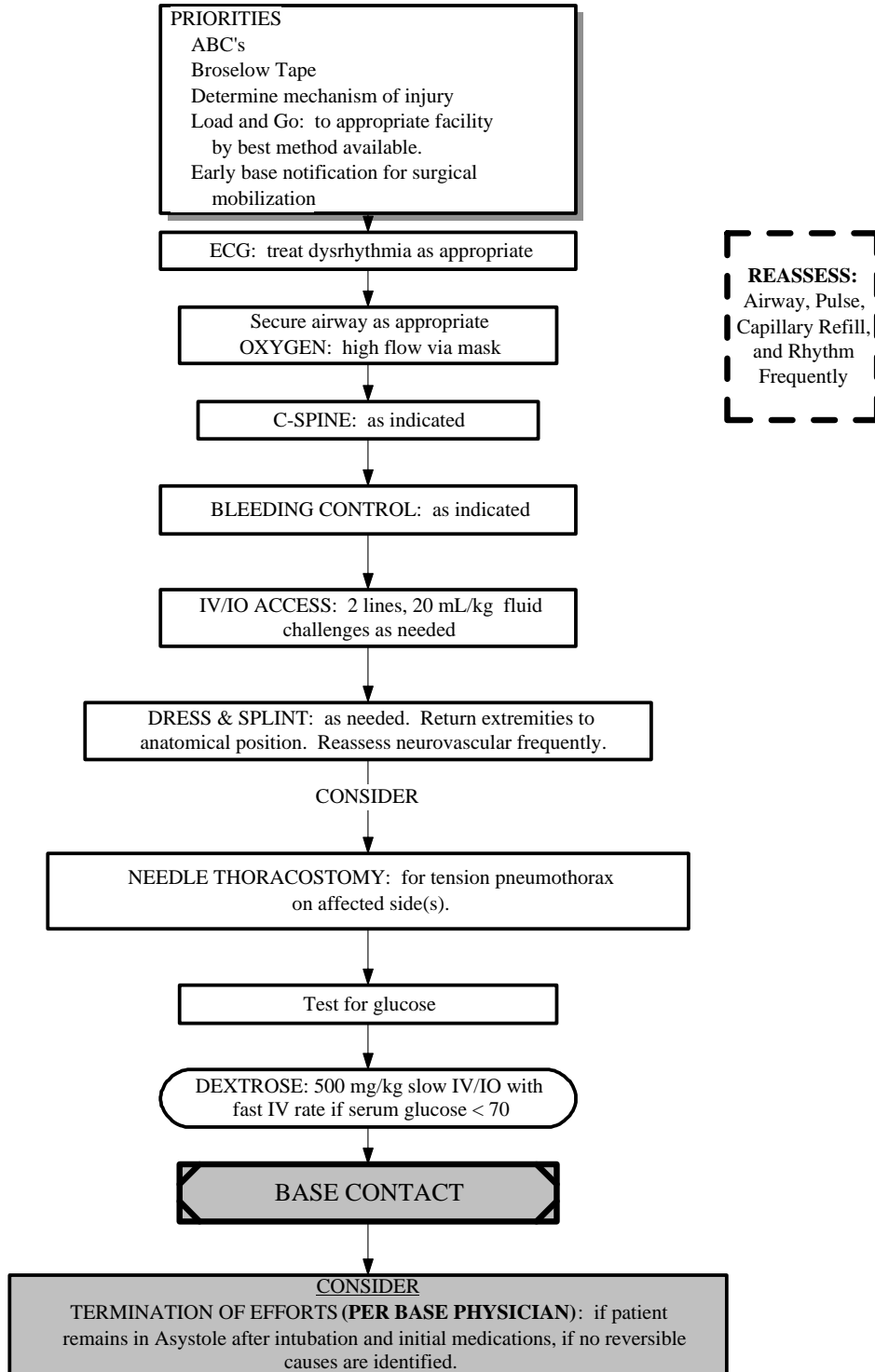
REASSESS:
Airway, Pulse,
Capillary Refill,
and Rhythm
Frequently

San Joaquin EMS Agency

PEDIATRIC TREATMENT GUIDELINES - TRAUMA

TRAUMATIC ARREST (SJ-P83) effective 09/01/95

Revision #2
02/09/95

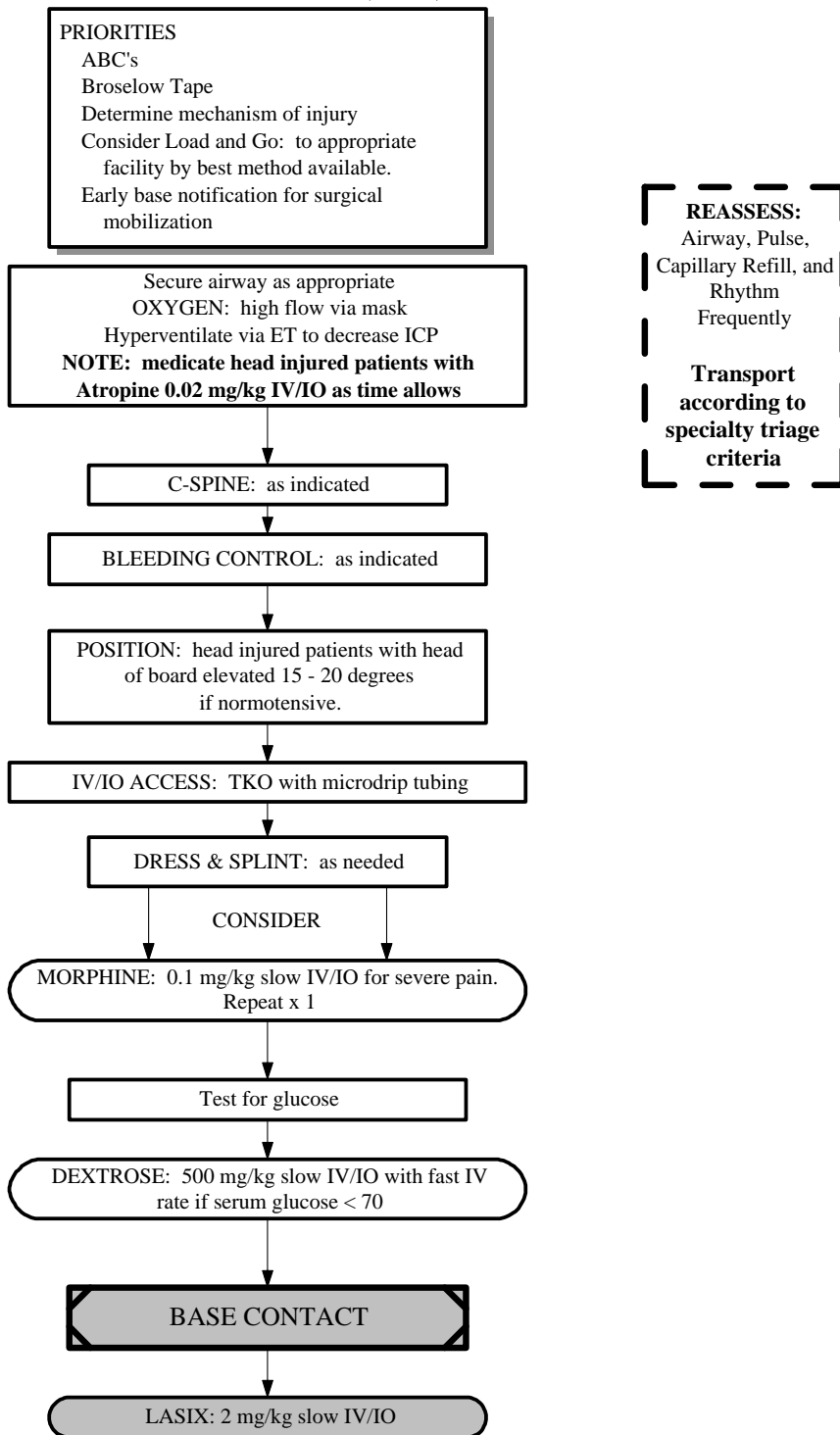


San Joaquin EMS Agency

PEDIATRIC TREATMENT GUIDELINES - TRAUMA

HEAD - NECK - FACIAL TRAUMA (SJ-P84) effective 09/01/95

Revision #2
02/09/95

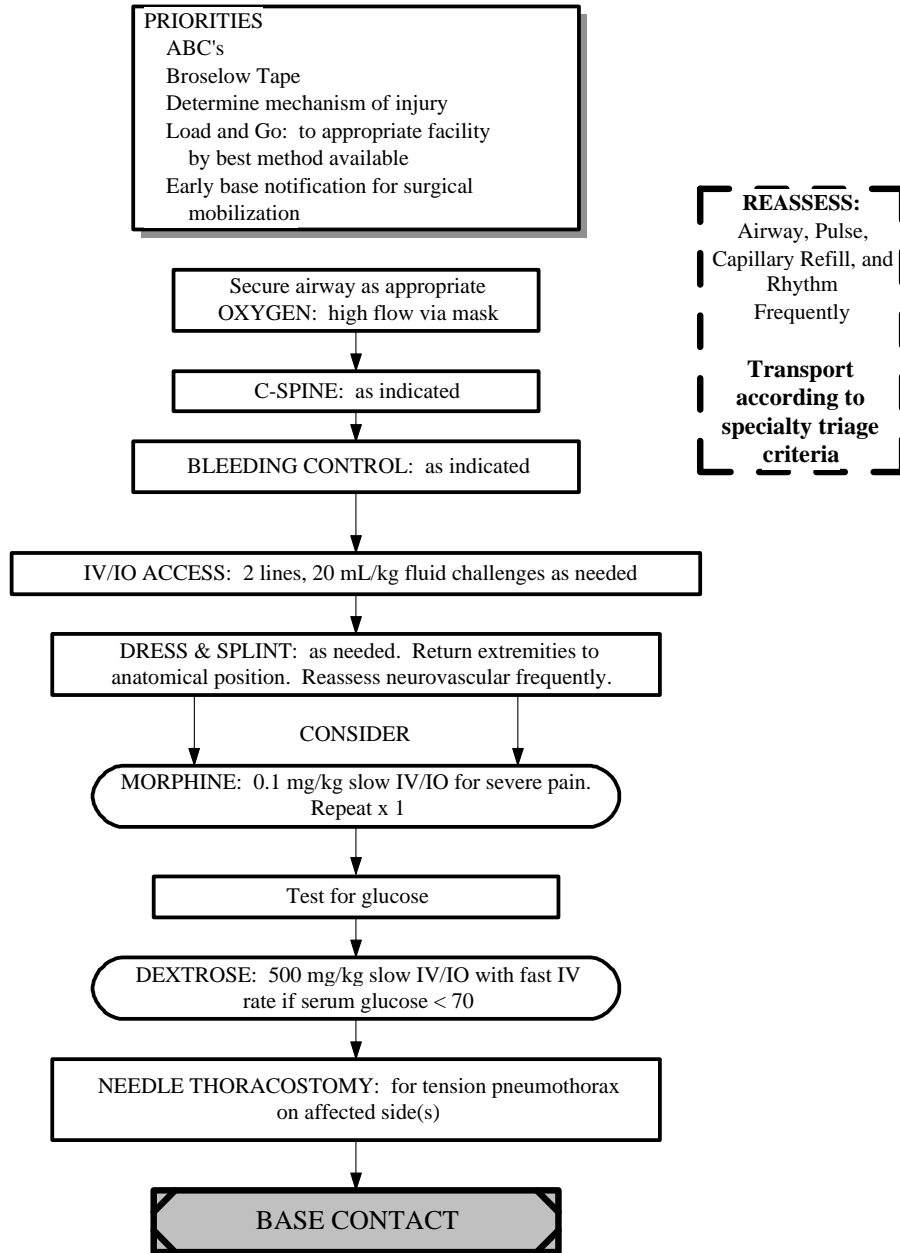


San Joaquin EMS Agency

PEDIATRIC TREATMENT GUIDELINES - TRAUMA

CHEST TRAUMA (SJ-P85) effective 09/01/95

Revision #2
02/09/95

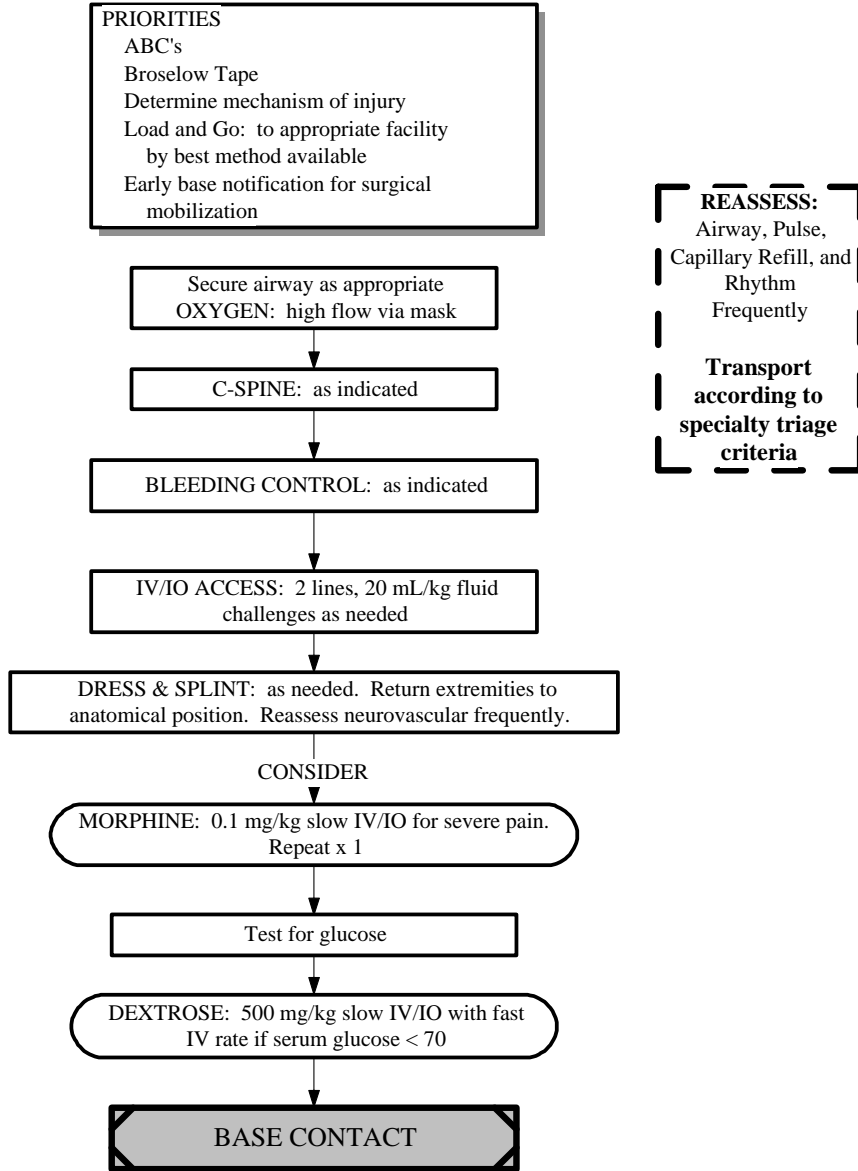


San Joaquin EMS Agency

PEDIATRIC TREATMENT GUIDELINES - TRAUMA

ABDOMINAL TRAUMA (SJ-P86) effective 09/01/95

Revision #2
02/09/95



San Joaquin EMS Agency

PEDIATRIC TREATMENT GUIDELINES - TRAUMA

EXTREMITY TRAUMA (SJ-P87) effective 09/01/95

Revision #3
03/08/95

